



# 24

**STATE THEATRE**  
**COMPANY SOUTH AUSTRALIA**



**STATE THEATRE**  
COMPANY SOUTH AUSTRALIA

Ngadlu tampinhi Kurna  
miyurna yaiya yarta-mathanya  
Wama Tarntanyaku.

Parnaku yailtya, parnaku tapa  
purruna, parnaku yarta ngadlu  
tampinhi. Yalaka Kurna Miyurna  
itu yailtya, tapa purruna, yarta kuma  
puru martinhi, puru warri-apinhi,  
puru tangka martulayinhi. Ngadlu  
tampinhi purkarna pukinangku,  
yalaka, tarrkarritya.

We acknowledge the Kurna  
people as the traditional custodians  
of the Adelaide Plains.

We recognise and respect their  
cultural heritage, beliefs and  
relationship with the land.  
We acknowledge that they are  
of continuing importance to the  
Kurna people living today and  
pay respects to Elders past,  
present and future.



*The Hon Andrea Michaels MP*

South Australia prides itself on being the arts capital of Australia and the Malinauskas Government is delighted to celebrate the 2024 season of our magnificent State Theatre Company South Australia.

State Theatre Company South Australia is a shining star in our state's cultural life and each year offers tens of thousands of people from across the state the opportunity to experience exciting locally made, nationally renowned theatre. Our Government is committed to supporting the Company as part of a rich, year-round calendar of arts and culture for South Australians to enjoy.

We are proud to enable the Company to present work in outer-metropolitan and regional South Australia as well as offer subsidised tickets for young people, students and those who would otherwise be unable to afford them.

This season offers a range of styles and scales of theatre for Adelaide audiences to enjoy across three of our main dramatic venues: the Dunstan Playhouse, Space Theatre and Her Majesty's Theatre.

I congratulate the whole team at State Theatre Company South Australia for putting together a great program and I encourage everyone to get along and share in some phenomenal theatre in 2024.

**The Hon Andrea Michaels MP**

Minister for Arts  
Minister for Small and Family Business  
Minister for Consumer and Business Affairs



*Joe Thorp*

I'm thrilled to introduce you to the State Theatre Company South Australia 2024 season.

This program represents the Company's commitment to making art that represents and includes the community broadly. We recognise our unique role as the state's flagship professional theatre company to present work that inspires thinking, joy and conversation and reminds us of our shared humanity. In everything we make, we strive to showcase the virtuosity of theatre artists and the magic of our artform.

On behalf of the Board, I express my deep thanks to Mitchell, Julian and all the staff at the Company for developing this program and for their work throughout the year. Many are long-serving and all are hard working. The effort behind the scenes is as collaborative as what takes place on stage, and I thank everyone in the Company for their collective commitment to making, presenting and promoting outstanding theatre.

I acknowledge and thank the South Australian Government, through Arts SA, and the Australian Government, through Creative Australia, for their ongoing support. Thank you also to our broad community of donors and corporate supporters for their faith and investment in the Company; we simply could not make it work without you.

State Theatre Company South Australia is fortunate to enjoy the consistent strong support of a large community and audience; we value your involvement, interest and care for the Company as subscribers or single ticket buyers, artists, theatre and arts industry members, teachers, students and many more.

We hope you'll enjoy a fabulous year of theatre with us in 2024!

**Joe Thorp**  
Board Chair

# WELCOME TO 2024



Artistic Director Mitchell Butel and Executive Director Julian Hobba

*"The heart is very much like the sea - it has its storms, it has its tides and in its depths, it has its pearls too."* (Vincent Van Gogh)

A common element sometimes emerges when putting together a season of diverse and brilliant theatre works that will meet the moment, speak to the challenges we face as a country and a species and that might help us find common ground.

In 2024, we are thrilled to present you with a stunning lineup of new South Australian and Australian plays and musicals, beloved classics borne anew and the best of contemporary international theatre that all meet the moment in unique and powerful ways, and are brought to life by some of Australia's favourite actors and creators.

The sea is at the centre of many of these phenomenal works.

In Lucy Kirkwood's acclaimed West End and Broadway success, the climate-focused *The Children*, English coastal dwellers are faced with metaphoric and literal rising tides. In Thomas Weatherall's *Blue*, a First Nations man turns to the sea for space and solace. In Leonard Bernstein's comic musical masterpiece, *Candide*, Voltaire's global adventurers voyage across the waters in search of Eldorado and the best of all possible worlds. In Samuel Adamson's adaptation of Peter Carey's award-winning novel *Jack Maggs*, our eponymous hero, inspired by Charles Dickens' *Magwitch*, boats back to London from convict Australia, looking for his son and in many ways, himself. Travel across oceans of both the heart and the map feature in the theatrical worlds created by Van Badham and Richard Wise in their new Australian rom-com musical about love and lockdown in *The Questions* and Joanna Murray-Smith's smash hit deep dive into the life and legacy of Australia's first female prime minister, Julia Gillard, in *Julia*. And to mark the 50th anniversary of the opening of the Dunstan Playhouse, Australia's most prolific and venerated playwright, David Williamson, whose work was commissioned for that initial Playhouse season, returns to Adelaide to deliver to us the world premiere of his dazzling new social comedy which is firmly and hilariously set on the high seas – *The Puzzle*.

Swimming into the spotlight in 2024 will be some of the state and country's most skilled and celebrated performers including Erik Thomson, Caroline O'Connor, Tina Bursill, Callan Purcell, Charles Wu, Mark Saturno, James Smith, Ahunim Abebe, Hew Parham and Adelaide's very own international superstar, Hans!

Once again this year, State Theatre Company South Australia will demonstrate how much it loves collaborating, as we hoist our sails with some esteemed creative partners from Belvoir St Theatre, Country Arts SA, Brink Productions, Sydney Theatre Company, State Opera South Australia and the Adelaide Symphony Orchestra.

We had record attendances at our shows in 2023, not just in South Australia but around the country, and we want to ensure that you don't miss out on seeing what we have in the hold for you in 2024.

By subscribing, you get the upper deck cabin with a dedicated porthole into theatrical bliss.

And you'll get to feel the pleasure of what it's like to say yes to listening to an array of different voices.

It is a true privilege to work for this wonderful Company and to bring you this treasure chest of great productions.

All aboard!

**MITCHELL BUTEL**  
ARTISTIC DIRECTOR

**JULIAN HOBBA**  
EXECUTIVE DIRECTOR

# SUBSCRIBE TODAY!

★ **HUGE  
DISCOUNTS**

★ **BEST SEATS IN  
THE HOUSE**

★ **EXCLUSIVE  
EVENTS & OFFERS**



## SUBSCRIBING

- **IS EASY**
- **ALLOWS FLEXIBILITY WITH YOUR DATES**
- **COMES WITH PERSONAL SERVICE**
- **HELPS US THRIVE**



STATE THEATRE COMPANY SOUTH AUSTRALIA PRESENTS

# THE CHILDREN

BY LUCY KIRKWOOD

## DIRECTOR

Corey McMahon

## SET & COSTUME DESIGNER

Victoria Lamb

## LIGHTING DESIGNER

Nic Mollison

## COMPOSER

Belinda Gehlert

## SOUND DESIGNER

Andrew Howard

## STARRING

Tina Bursill  
Terence Crawford  
Genevieve Mooy

## SUPPORTING PARTNER

*Adina*

## CONTENT

Contains adult themes,  
mild coarse language,  
mild sexual references,  
and the use of herbal  
cigarettes.

*I don't know how to want less.*

In a small English coastal cottage, former nuclear scientists Hazel and her husband Robin are enjoying a quiet retirement, despite living just outside the exclusion zone of a dangerously crumbling nuclear power plant.

She practices her yoga, while he tends to his cows and, bar the rolling blackouts, their lives seem mostly untouched by the chaos outside - until a visit from an old friend and colleague with hidden intentions shakes their peaceful existence, forcing them to confront their secret jealousies and their past and future.

From award-winning playwright and "the most rewarding dramatist of her generation" (The Independent) Lucy Kirkwood, *The Children* is a storm-gathering exploration of survival, desire, friendship and duty, premiering in Adelaide following acclaimed productions in London, New York, Melbourne and Sydney.

A trio of Australia's most celebrated and beloved actors - Tina Bursill (*Doctor Doctor*, *The Moodys*), Genevieve Mooy (*Wellmania*, *The Appleton Ladies' Potato Race*) and Terence Crawford (1984, *Girl From The North Country*) - grace the stage in this tender and provocative production directed by Corey McMahon (*The Bleeding Tree*).

Like HBO's *Chernobyl* and in the tradition of our other recent climate change-focused work like *Hibernation*, *The Children* grapples with seismic questions about the future of the planet and the moral dimensions of humanity. What responsibility does each generation have for the next?

*"It's engrossing, disturbing, funny and nightmarish. Recommended!" - Stage Noise*

*"A witty, slippery play of debate as well as an engaging character study." - The Stage*

*"This is sci-fi kitted out with real people, real dilemmas, real scope. It's really good." - Time Out*

2 - 17 FEB  
DUNSTAN PLAYHOUSE



STATE THEATRE COMPANY SOUTH AUSTRALIA IN ASSOCIATION WITH  
ADELAIDE FESTIVAL PRESENT A BELVOIR ST THEATRE PRODUCTION

# BLUE

## BY THOMAS WEATHERALL

### DIRECTOR

Deborah Brown

### SET & COSTUME DESIGNERS

Jacob Nash & Cris Baldwin

### LIGHTING DESIGNER

Chloe Ogilvie

### SOUND DESIGNER & COMPOSER

Wil Hughes

### VIDEO DESIGNER

David Bergman

### VOCAL COACHES

Laura Farrell & Amy Hume

### DRAMATURG

Dom Mercer

### STARRING

Callan Purcell

### CREATIVE PARTNERS



### CONTENT

Contains references to suicide, coarse language, theatrical haze and herbal cigarettes.

### *It's just me and the water.*

Mark has always wanted to be a writer. His mum's a writer too, and together they'd spend hours reading and writing in their garden. When Mark moves out of his childhood home and into his first share flat, he and his mum stay connected by exchanging letters. When Mark one day receives a letter with the news too painful to bear, he seeks solace in the sea – the source of his fondest yet most agonising memories.

Written by Balnaves Fellow, AACTA and Logie Award-winner and Kamilaroi man Thomas Weatherall, *Blue* is a breathtaking deep dive into the beauty, comedy, joy and sadness of growing up.

Following a hit premiere season at Belvoir St Theatre and coming to our stage as part of the 2024 Adelaide Festival, Weatherall's captivating play paints a vivid picture of a young man's life, coloured by tragedy, loss, and love.

Directed by Deborah Brown, Senior Artist for Bangarra Dance Theatre with video design by David Bergman, acclaimed for his ingenious film work on *The Picture of Dorian Gray* with set and lighting design by Jacob Nash and Chloe Ogilvie (both of *At What Cost?* success), this stunning production will, like *Girls & Boys*, provide the perfect vehicle for one of Australia's most talented actors, Wiradjuri man Callan Purcell, recently seen as Aaron Burr in *Hamilton*.

*"An impressive debut by a talented young artist who writes with a freshness and vulnerability."*

- *The Sydney Morning Herald*

*"Breathtaking visual transformations that move us beyond the capacity of words."* - *Suzy Goes See*

**23 FEB - 16 MARCH**  
**SCOTT THEATRE**



STATE THEATRE COMPANY SOUTH AUSTRALIA AND STATE OPERA SOUTH AUSTRALIA PRESENT

# CANDIDE

**MUSIC BY LEONARD BERNSTEIN | BOOK BY HUGH WHEELER AFTER VOLTAIRE**  
**LYRICS BY RICHARD WILBUR WITH ADDITIONAL LYRICS BY STEPHEN SONDHEIM, JOHN LATOUCHE, LILLIAN HELLMAN, DOROTHY PARKER AND LEONARD BERNSTEIN | ORCHESTRATIONS BY LEONARD BERNSTEIN AND HERSHEY KAY; MUSICAL CONTINUITY AND ADDITIONAL ORCHESTRATIONS BY JOHN MAUCERI**

## CONDUCTOR

Anthony Hunt

## CO-DIRECTOR

Mitchell Butel

## CO-DIRECTOR & CHOREOGRAPHER

Amy Campbell

## STARRING

Annie Aitken  
Mitchell Butel  
Hans  
Alex Lewis  
John Longmuir  
and  
Caroline O'Connor

## CREATIVE PARTNERS



STATE OPERA  
SOUTH AUSTRALIA

## CONTENT

Contains adult themes  
and sexual references.

*All's for the good in the best of all possible worlds.*

In 2024, South Australia's flagship theatre and opera companies will come together for the first time in more than a decade, along with the Adelaide Symphony Orchestra, to present a spectacular concert version of Leonard Bernstein's beloved comic operetta and existential vaudeville, *Candide*.

Based on Voltaire's 1759 novella, this ever-relevant Broadway hit tells the story of naïve young Candide, facing exile after falling in love with the Baron's daughter, Cunegonde, and their mutual embarking on an enthralling, lyrical, sobering but hilarious journey across the globe that challenges their optimistic outlooks on life and love.

Voltaire's characters leap off the page and onto the stage in this major theatrical event, bringing together some of Australia's most celebrated musical and opera stars, including Alex Lewis (*The Merry Widow*, Barrie Kosky's *The Nose*) as Candide, Annie Aitken (*Thoroughly Modern Millie*) as Cunegonde, John Longmuir (*The Pirates of Penzance*, *The Barber of Seville*) and featuring the legendary talents of Adelaide Cabaret Festival Icon Award-winning superstar Hans (Matt Gilbertson) and Australian and West End stage titan Caroline O'Connor (*Chicago*, *Moulin Rouge*, *9 to 5 The Musical*).

Artistic Director Mitchell Butel will share directing duties with Co-Director and Choreographer, Amy Campbell (*A Chorus Line*, *Once*) as well as assuming the roles of our Narrator and Candide's teacher, Pangloss, in his first stage appearance since *The Normal Heart*.

Composed by *West Side Story* and *On The Town*'s Leonard Bernstein and with lyrics from some of the greatest writers of the 20th century including Lillian Hellman, Dorothy Parker and Stephen Sondheim, the score sparkles with classic songs including "The Best of All Possible Worlds", "Glitter and Be Gay", "Eldorado" and "Make Our Garden Grow".

Prepare to be swept away, as the history and artistry of State Theatre Company South Australia and State Opera South Australia converge in this epic, mischievous and stirring new production at Adelaide's glorious Her Majesty's Theatre.

*"Vibrant, fantastical and exhilarating" - ArtsHub*

*"A rich, riotous and rewarding evening of entertainment, based upon one of the world's most respected all-time literary classics." - Stage Whispers*

*"Its plot is as impudently peripatetic as its protagonists and its wildly eclectic score ranges from bubbling musical comedy charm song to coloratura aria, Spanish dance to Mahlerian cri de couer." - David Savran, ORC*

**23 - 25 MAY**  
**HER MAJESTY'S**  
**THEATRE**



STATE THEATRE COMPANY SOUTH AUSTRALIA PRESENTS

# THE QUESTIONS

BY VAN BADHAM (BOOK & LYRICS)  
AND RICHARD WISE (MUSIC & LYRICS)

## DIRECTOR

Mitchell Butel

## SET & COSTUME DESIGNER

Jeremy Allen

## LIGHTING DESIGNER

Gavin Norris

## SOUND DESIGNER

Andrew Howard

## STARRING

Charles Wu

## SUPPORTING PARTNER

**novatech**  
creative event technology

## SUPPORTED BY

## COMMISSIONING COLLECTIVE

## CONTENT

Contains some coarse language and adult themes.

*There's an experiment. I think we should try it.*

She has a master's degree in Gender Studies. He thinks Jordan Peterson would make an ideal dinner guest. They both realise this blind date is doomed, but an outside catastrophe and "shelter in place" lockdown order forces these polar opposites into the longest first date ever. And the frustrated rock band rehearsing in the apartment next door is hardly helping them stay calm. Desperate to end the constant bickering, they turn to "The Questions", a real-life psychological questionnaire researchers promise can build intimacy between anyone. But are either of them ready for the answers?

Inspired by a true story from the COVID-19 pandemic, *The Questions* is a world premiere rom-com musical with edge from iconoclastic Australian playwright, columnist and author, Van Badham, featuring genre-busting, folk, punk and pop melodies from her long-time collaborator, composer Richard Wise (*Late Night Story*).

Starring Charles Wu (*Doctor Doctor*) and a cast of singer-actor-musician dynamos, *The Questions* taps squarely into the zeitgeist with a hilarious and unsparing observation of modern intimacy. Will chaos and disaster reign? Or will our mismatched couple find meaningful connection, even love?!

*"Van Badham (is) one of the leading voices of her generation."* - Time Out London

*"Van Badham may have one of the biggest and quickest minds in Australia, but it's her huge heart that takes the stage."* - Nakkiah Lui, Writer

*"Charles Wu is an actor of captivating verve and astonishing precision."* - Suzy Goes See

26 JULY - 17 AUG  
SPACE THEATRE



STATE THEATRE COMPANY SOUTH AUSTRALIA IN ASSOCIATION WITH THE UNIVERSITY OF ADELAIDE  
PRESENTS A SYDNEY THEATRE COMPANY AND CANBERRA THEATRE CENTRE PRODUCTION

# JULIA

BY JOANNA MURRAY-SMITH

## DIRECTOR

Sarah Goodes

## DESIGNER

Renée Mulder

## LIGHTING DESIGNER

Alexander Berlage

## COMPOSER & SOUND DESIGNER

Steve Francis

## VIDEO DESIGNER

Susie Henderson

## STARRING

Jessica Bentley

Justine Clarke

## PRODUCERS

SYDNEY  
THEATRE  
CO

CANBERRA  
THEATRE  
CENTRE

## PRESENTED BY

THE UNIVERSITY  
OF ADELAIDE 150 YEARS

## SUPPORTED BY

DRAMATIC  
WOMEN

## CONTENT

Contains strong language  
and strobe lighting.

## *Not now. Not ever.*

In 2012, Australia's first female Prime Minister, Julia Gillard, gave a speech that sent shockwaves around the world. Just over a decade later, one of Australia's most esteemed and globally-produced playwrights, Joanna Murray-Smith, brings the human story behind that speech to the stage.

Justine Clarke, whose triumphant turn in *Girls & Boys* around the country cemented her position as a dramatic powerhouse, takes on the role of a lifetime embodying the life and career that led to the famous 'misogyny speech'. Directed by Helpmann Award-winner Sarah Goodes, *Julia* was a sold-out success when it premiered in Canberra and Sydney in 2023, dazzling audiences with a profound, wry and intoxicating exploration of gender, privilege and power.

This is both an intimate and compelling insight into the person behind the public mask and a reflection on the experience of women in contemporary politics. Combining genuine excerpts from Gillard's speech with Murray-Smith's incredible dramatic imagination, this play is a thrilling coming together of history and art.

As women around the world continue to fight for human rights, representation and against oppression, *Julia* is an empowering reminder of where we've come from and the challenges that lie ahead, seen through the prism of Julia Gillard's childhood, education in Adelaide and her journey into and through the battlefield of Australian politics.

*"Justine Clarke brilliantly becomes Julia Gillard in this heroic performance"* - *The Sydney Morning Herald*

*"A highly humanising and proud portrait of Gillard through the years, from young girl to federal helmswoman...Julia shines a light on a significant historical moment."* - *Limelight*

*"Justine Clarke is electrifying...[Sarah] Goodes shapes the piece with insight and care"* - *The Guardian*

*Julia* is presented as part of The University of Adelaide's 150th Anniversary Program.

16 – 31 AUGUST  
DUNSTAN PLAYHOUSE



STATE THEATRE COMPANY SOUTH AUSTRALIA PRESENTS

# THE PUZZLE

BY DAVID WILLIAMSON

## DIRECTOR

Shannon Rush

## STARRING

Ahunim Abebe  
Chris Asimos  
Erik Thomson

## PRESENTING PARTNER

water<sup>n</sup>ish

## CONTENT

Contains some coarse language, adult themes and strong sexual references.

*When you've got the right piece, you're in no doubt.*

All aboard for the world premiere of a dazzling new comedy from Australia's most prolific and venerated playwright, David Williamson.

When the Dunstan Playhouse opened in 1974, former Artistic Director, George Ogilvie commissioned Williamson to write the now legendary play *The Department* for State Theatre Company South Australia. Fifty years later, the master wordsmith delivers to Adelaide audiences a delicious new black comedy about marriage, desire, polyamory and parenthood set to hit those same heights.

Married couple Mandy and Craig are bored with their (mostly) monogamous relationship. Eager to inject some vim into their vows, they book themselves in for a "lifestyle" cruise, where they meet Brian and Michele, similarly looking for some stimulation at sea...

Meanwhile, the buttoned-up Drew and his free-spirited daughter, Cassie are just trying to reconnect on what he thought was an "art" tour!

The keys go in the jar, the recriminations flow in the bar.

This large cast of comic experts is led by the AFI and Logie Award-winning Erik Thomson (*Packed to the Rafters*, *Aftertaste*) as Drew, Chris Asimos (*Ripcord*, *Hibernation*) as Brian and in her professional stage debut, the electric Ahunim Abebe as Cassie.

*The White Lotus* meets *Triangle of Sadness* meets *Don's Party* in this bitingly funny, smart and surprising take on sex, secrecy and second chances, directed by Artistic Associate Shannon Rush (*Cathedral*).

*"Williamson (is)... Australia's most enduringly popular social comedy writer... keenly observant and satirical."*  
- The Sydney Morning Herald.

*"Our greatest dramatic entertainer."*  
- Australian Financial Review

20 SEP - 12 OCT  
DUNSTAN PLAYHOUSE



STATE THEATRE COMPANY SOUTH AUSTRALIA IN ASSOCIATION WITH  
ADELAIDE FESTIVAL CENTRE PRESENTS

# JACK MAGGS

BY SAMUEL ADAMSON

BASED ON THE NOVEL BY PETER CAREY

## DIRECTOR

Geordie Brookman

## SET & COSTUME DESIGNER

Ailsa Paterson

## COMPOSER

Hilary Kleinig

## SOUND DESIGNER

Andrew Howard

## STARRING

Ahunim Abebe

Jacqy Philips

Mark Saturno

James Smith

## PRESENTING PARTNER



## SUPPORTED BY

MAJOR  
PRODUCTION  
FUND

## CREATIVE PARTNER



## CONTENT

Contains some coarse  
language and adult themes.

*You're a dead man if they find you.*

Step back in time to 19th century London, where intrigue and mystery mix in the world premiere of *Jack Maggs*. A reworking of Peter Carey's best-selling and Miles Franklin Award-winning "sequel" to Charles Dickens' canonical novel *Great Expectations*, *Jack Maggs* comes alive on stage in a sweeping new adaptation by South Australian playwright Samuel Adamson, renowned for his successes at England's National Theatre with *Southwark Fair* and *The Light Princess* with Tori Amos.

The story follows the enigmatic ex-convict Jack Maggs (Carey's version of *Magwitch*) returning to London from Australia and embarking on a relentless quest to find his 'son' Henry Phipps, who has mysteriously disappeared. Maggs soon becomes entangled in the web of Phipps' neighbour, Percy Buckle and his bizarre household, where he makes a deal with young novelist and "mesmerist" Tobias Oates (or is it Charles Dickens himself?) to find Phipps. Oates has other plans though, and in Maggs, might just find the perfect inspiration for his new novel.

Unveil a world of ambition, secrets and unexpected alliances, with a cast of beloved and celebrated South Australian actors including Mark Saturno (*The Goat or, Who Is Sylvia?*, *A View from the Bridge*) as Jack Maggs, James Smith (*Euphoria*, *Girl From The North Country*) as Tobias Oates, Jacqy Philips (*Mr Burns*, *a Post-Electric Play*), and recent NIDA graduate hotshot Ahunim Abebe.

Under the masterful direction of former Artistic Director, Geordie Brookman, *Jack Maggs* will take audiences on a strange and surprising slither around the Old Dart with a cavalcade of dazzling Dickensian characters all in search of the truth, in the most exciting page to stage adaption since *The Dictionary of Lost Words*.

*"Peter Carey's narrative rushes like a great stream towards a glittery fall, gathering momentum as it rolls."*  
- *The Boston Globe*

*"Wildly entertaining."* - *New York Review of Books*

*"Samuel Adamson writes the best dialogue I've ever read or had the pleasure to direct. It's metropolitan, quick-witted, alive with internal tensions, graceful, lightweight and profound."* - *Dominic Dromgoole, Former Artistic Director, Shakespeare's Globe*

15 - 30 NOVEMBER  
DUNSTAN PLAYHOUSE



STATE THEATRE COMPANY SOUTH AUSTRALIA PRESENTS BRINK PRODUCTIONS'

# SYMPHONIE OF THE BICYCLE

BY HEW PARHAM

## DIRECTOR

Chris Drummond

## COMPOSER & SOUND DESIGNER

Will Spartalis

## SET, COSTUME & LIGHTING DESIGN

Wendy Todd

## ASSOCIATE LIGHTING DESIGNER & TECHNICAL OPERATOR

Aaron Herczeg

## DRAMATURG

Caleb Lewis

## STARRING

Hew Parham

## SUPPORTED BY



Government of South Australia  
Department for Education

FWH FOUNDATION

STATE EDUCATE  
COLLECTIVE

## CREATIVE PARTNERS

BRINK



COUNTRY  
ARTS  
SA

## CONTENT

Contains coarse  
language.

14 - 25 MAY  
SPACE THEATRE

FOLLOWED BY AN OUTER-METROPOLITAN AND REGIONAL SOUTH AUSTRALIAN TOUR

*Life is short, and the Tour de France is long.*

Over 200 years ago a volcano erupts over Indonesia spreading an ash cloud all the way to Europe, to the home of inventor Karl Von Drais. When his beloved horse passes away due to the ash, Karl struck by a moment of inspiration devises a two-wheeled man-powered mode of transport, the humble bicycle.

Flash forward to the present day where we meet Hew, an aspiring cyclist stuck in a rut of dead-end jobs and missed opportunities. He harbours a pathological envy of his successful high school friend, Jake, now a professional cyclist. The story of Hew runs parallel with that of two-time Tour de France champion Gino Bartali, who risked his life during WWII to secretly transport documents to save Jewish people in Northern Italy. A chain of uphill battles, twists and turns leads to a most unlikely meeting on a mountain.

Written by and starring Hew Parham, this gem of a show weaves together a series of outrageous characters and stories across time and space in an absurdly hysterical, yet ultimately moving portrait of the quest for glory and heroism.

Directed by Adelaide legend Chris Drummond, *Symphonie of the Bicycle*, is a funny, heartfelt show about cycling and obsession, envy, ambition, winning and losing, and finding the inner grit to dominate the mountain stages of life.

*"Extremely funny, poignant, emotionally raw and richly entertaining"* - Glam Adelaide

*"Beautifully written, a deft mix of light and dark, with many amusing moments."* - The Advertiser

*"Hew Parham has the audience in the palm of his hand and holds them there."* - InDaily

# STATESIDE

MADNESS OF TWO PRESENTS

## STARWEAVER

BY JAMIE HORNSBY AND ELLEN GRAHAM

*It began with a satellite. Now the night sky is heavy, whizzing and whirring, and no one has seen a real star in over a generation. Capitalism is infinite, and legacy is bought and sold. The stars have become lonely. And vengeful. Something has to change.*

Following Cato, an A.I. engineer turned revolutionary, *Starweaver* grapples with the difficulties of overthrowing an unfair system and the thorny moral dilemmas of direct political action. Through a futuristic lens, *Starweaver* examines issues that matter right now, diving headfirst into a world of unfettered capitalism, revolution, entropy, memory, chaos and, ultimately, hope.

Crafted with a cutting-edge blend of CGI and gaming technology, *Starweaver* promises to be an urgent and unforgettable science-fiction epic. Brought to you by the multi-award-winning theatre makers Madness of Two.

**DIRECTOR** Shannon Rush

**DESIGNER** Kathryn Sproul

**LIGHTING DESIGNER** Mark Oakley

**SOUND DESIGNERS** Paul Goodman & Jamie Hornsby

**CAST INCLUDES**

Ellen Graham  
Jamie Hornsby  
Jasmin McWatters

**CONTENT**

Occasional coarse language, depictions of violence.

MADNESS  
of TWO



25 JUNE – 6 JULY 2024

The Void – Flinders University Drama Centre



DATE	TIME
25 Jun	7pm (Preview)
26 Jun	7pm (Opening Night)
27 Jun	7pm
28 Jun	7pm
29 Jun	2pm & 7pm
2 Jul	7pm
3 Jul	7pm
4 Jul	7pm
5 Jul	7pm
6 Jul	2pm & 7pm

TICKETS	ADULT	CONC	UNDER 30
	\$48.00	\$39.00	\$35.00

*Starweaver* was developed and produced with the assistance of the Australian Writers' Guild's David Williamson Prize. It is supported by Flinders University and was initially developed as part of the Adelaide Festival Centre's inSPACE Development Program. *Starweaver* is supported by Jopuka Productions.

[www.madnessoftwo.com.au/starweaver](http://www.madnessoftwo.com.au/starweaver)

State Theatre Company South Australia supports and showcases other great local theatre companies as part of our Stateside program. Stateside productions are made and presented by other companies but receive substantial production, rehearsal and marketing support. As a State Theatre Company South Australia Subscriber, you receive 10% off tickets to these magnificent projects: simply make your selection on the booking form.

BRINK PRODUCTIONS IN ASSOCIATION WITH  
ADELAIDE FESTIVAL CENTRE PRESENTS

## SHORE BREAK

BY CHRIS PITMAN

*Shore Break* tells the story of a man brought up in an emotionally illiterate, culturally bereft world. Bumping through childhood and adolescence into adulthood, he is consumed by awkwardness, confusion, anger and an inability to connect.

Something inside him has broken.

So, he turns to the ocean. A place that will hold him and keep his secrets.

As memory overtakes, he begins to unravel, trying to decipher what he has done, who he is, and how he might find his way back to civilisation.

But is there enough forgiveness left in the world?

*"It is not only Pitman's magnificent performance that has impact. The quality of his writing is impeccable, awe-inspiring even. There are a multitude of rhythms here, from liltingly poetic to the staggered beat of a man trying to articulate and understand his deepest, discontented thoughts."* Stage Whispers

*"Shore Break's troubled, reminiscing narrator [conveys] descriptions of the wild beauty of the Australian coastal landscape and the rhythms of a colourful Aussie vernacular."* Arts Hub

**WRITER & PERFORMER** Chris Pitman

**DIRECTOR** Chelsea Griffith with Chris Drummond

**DRAMATURG** Chelsea Griffith

**CONTENT**

Frequent coarse language.

**CREATIVE PARTNER**



3 – 7 SEPTEMBER 2024

Space Theatre



DATE	TIME
3-Sep	7pm (Preview)
4-Sep	7pm (Opening Night)
5-Sep	7pm
6-Sep	7pm
7-Sep	2pm & 7pm

TICKETS	ADULT PREVIEW/MATINEE	CONC PREVIEW/MATINEE
	\$54.00	\$49.50

ADULT GENERAL	CONC GENERAL
\$63.00	\$54.00

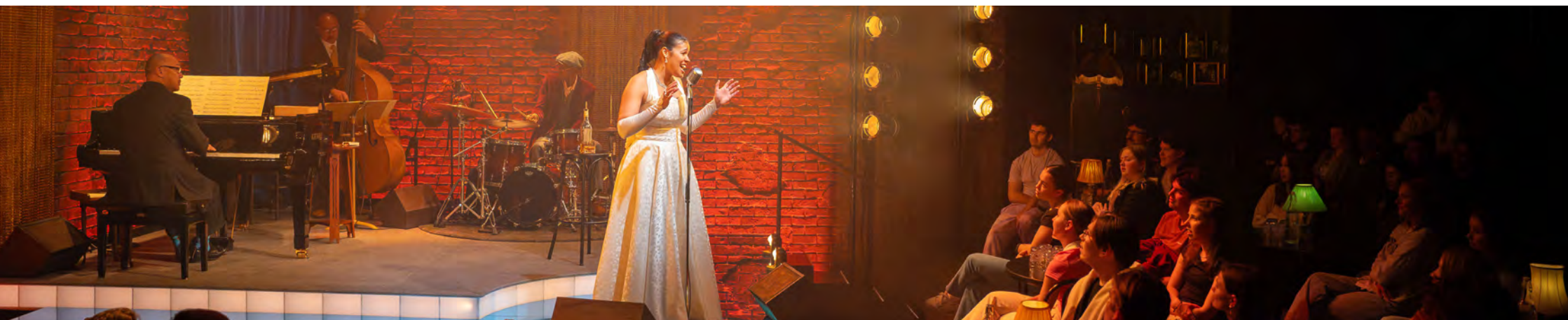
**STUDENT/UNDER 30 PREVIEW & GENERAL:**  
\$31.50

Special Early Bird price for Subscribers.  
If you subscribe and purchase tickets before 1 December 2023, all Preview/Matinee are tickets \$45 and General tickets are \$50.

<https://www.brinkproductions.com>



# SUBSCRIBER BENEFITS



Join our family of Subscribers today and enjoy a range of benefits and opportunities.

## HUGE TICKET DISCOUNTS

Subscribers receive up to 20% off standard ticket prices! The larger the subscription package, the larger the discount. There are additional savings for Seniors Card holders and if you're under 30, or a full-time student, you receive a whopping discount when you subscribe.

## BEST SEATS IN THE HOUSE

Subscribers have priority access to the very best seats in the house. You can subscribe at any time but to guarantee the best seats, subscribe during the priority booking period up until 1 December 2023.

## EXCLUSIVE EVENTS & OFFERS

Subscribers are invited to Subscriber Briefings, talks and events throughout the year to explore the themes of our shows and go behind-the-scenes of how they're made.

You'll also receive special prices with other arts events and businesses around Adelaide, including bars and restaurants near the theatre.

Special Subscriber-only offers are provided from locations and organisations such as:

- Adina Apartment Hotels/TFE Hotels
- Fino Vino
- Bread and Bone
- Eleven
- Mall E
- Leigh Street Wine Room
- NT Live - Wallis Cinema
- ORBE Norwood
- Palace Nova Cinemas
- Parlamento Restaurant
- S.C. Pannell Winemakers
- Shobosho
- Sprout
- Strathmore Hotel
- T Bar Tea Salon
- The Lane

## FLEXIBILITY

Your subscription tickets are super flexible. You will have one free exchange per show – you will not be charged any transaction fees if you would like to exchange your ticket for another date (subject to availability).

## SUBSCRIBER ADDITIONAL TICKETS

Book additional tickets at discounted Subscriber prices for family and friends at any time up to the show. Please see the booking form or our website for pricing information.

## PAYMENT PLANS

We offer Subscriber-only payment plans where you can pay in instalments. Please select the 'credit card by instalment' option on the booking form.

## PERSONAL SERVICE

We are here to help you! Our ticketing team at State Theatre Company South Australia is available to help you with your ticket package and any specific seating requests. So please contact us on ph 08 8415 5353 or email [subscriptions@statetheatrecompany.com.au](mailto:subscriptions@statetheatrecompany.com.au) for assistance to set up your subscription or throughout the year.

## GIFT VOUCHERS

Make the gift of theatre and purchase gift vouchers for friends and family at any cost, to be used at any available performance/s throughout the 2024 season.

## SUBSCRIBING IS EASY

Subscribing online is encouraged by visiting [statetheatrecompany.com.au](http://statetheatrecompany.com.au) or fill out the form at the back of this brochure.

# SUBSCRIBER PACKAGES



## SENIORS CARD SUBSCRIPTIONS

Anyone over the age of 60 in South Australia can get a Seniors Card, and that gets you an additional discount on subscriptions to State Theatre Company South Australia shows. Just select the Seniors Card discount type on the booking form or online and choose a senior subscription package.

## GOLD SUBSCRIPTION

Gold Subscribers are the only ticket holders invited to opening night shows and enjoy exclusive access to pre-show functions with the Company. Gold Subscriptions are strictly limited to 50 members so, book quickly to avoid missing out! All Gold Subscription packages include a minimum \$630 tax-deductible donation. Gold Subscriptions can be booked by filling out the booking form or by calling 08 8415 5353.

## UNDER 30 AND STUDENT PACKAGES

If you're under 30, or a full-time student (either secondary or tertiary), we want to make it as easy as possible for you to come to the theatre; so you will receive our most heavily subsidised subscription packages. For students, just enter your student number when booking online or via the form at the back.

## GROUP PACKAGES

Book subscriptions or single play tickets with your group of friends and every tenth ticket is free! Group bookings cannot be made online and must be made in a single transaction. To organise your group, please return your booking forms together or call 08 8415 5353.

## TEACHER SUBSCRIPTION PACKAGES

Receive hours of certified professional development just for coming to the theatre! Build your subscription package and tick the 'teacher subscriber' box on the booking form or online and you will receive your professional development certificate at the end of the year. Teacher subscription packages must include at least four of the following State Educate Program plays as a minimum: *The Children*, *Symphonie of the Bicycle*, *The Questions*, *Julia* and *Jack Maggs*.

# EVENTS

## TANGENT TALKS

Our Tangent Talks, hosted in association with State Library South Australia, bring our artists and audience together to share the big ideas driving the creation of our work. We gather the brightest, must-hear voices from the creative, academic and political worlds to open out the themes of select plays in our season. In 2024, the Tangent Talk series will dive into big ideas and important issues including optimism in an imperilled world, female education and Anglo-Australian literary legacies. Tickets are just \$10 and include a glass of wine from S.C Pannell. Tangent Talks begin at 6pm at the State Library of South Australia. Book on our website for each Tangent Talk.

Dates for 2024 Tangent Talks are:

*Candide* – Monday 29 April

*Julia* – Monday 15 July

*Jack Maggs* – Monday 28 October



## SUBSCRIBER BRIEFINGS

Subscribers are treated to exclusive briefings where you can step inside the theatre and hear from our incredible artists and creatives before the show hits the stage. This is your chance to get up close and personal with each show. Briefings start at 6pm and are included free of charge as part of your subscription. Please see the calendar on pages 39-40 for dates.

## POST-SHOW Q&A'S

After selected evening performances of shows throughout Season 2024, we hold Q&As with our artists and creative teams.

## A DATE WITH STATE

Supported by the Office for Ageing Well and Seniors Card, join us for tea and coffee from one hour before the performance of selected matinees for A Date With State. Stay after the performance to find out more about the process of getting these great plays from page to stage. There is no additional cost for Q&As or A Date With State, just join us on the nominated date. Simply check the calendar on pages 39-40 and book accordingly.

Office for Ageing Well and Seniors Card



Government of South Australia  
SA Health



SENIORS CARD

# STATE EDUCATE

Successive generations of South Australians have developed their love of theatre by attending State Theatre Company South Australia productions as secondary students.

We continue that tradition today through our State Educate program, with a focus to ensure at least 4,500 students attend our productions each year.

With our Education partners Flinders University and the University of Adelaide, we connect students with pathways to pursue careers in live performance including performing, directing, designing, stage management, technical roles, producing and marketing.

Each year State Educate also delivers:

- An outer-metropolitan and regional SA tour of one production
- Skill and knowledge workshops for hundreds of secondary students; including week-long Summer and Winter School intensives
- A week-long work experience program
- Professional development workshops for secondary teachers
- The Flinders University Young Theatre Makers Award

Please contact us on 08 8415 5333 or [education@statetheatrecompany.com.au](mailto:education@statetheatrecompany.com.au) to learn more about State Educate.



State Educate is supported by the SA Education Department, the Company's State Educate Collective of donors and our Education Partners Flinders University and The University of Adelaide and the James and Diana Ramsay Foundation.



Government of South Australia  
Department for Education

STATE EDUCATE  
COLLECTIVE

Flinders  
University

THE UNIVERSITY  
of ADELAIDE

JAMES & DIANA  
RAMSAY  
FOUNDATION



The State Theatre Company South Australia Foundation guides the Company's efforts to raise support through philanthropy and corporate and community partnerships.

This support is vital to the ongoing financial sustainability of State Theatre Company South Australia, our ability to deliver an artistic program that is abundant, consistently excellent and ambitious and to maintain a thriving state theatre company for the South Australian community. We are grateful for every donation we receive, whether through a donation made with the purchase of a subscription or single ticket, a contribution to our annual end-of-financial-year campaign, an ad hoc donation through our website, or membership to one of our donor groups (described on the page opposite).

We understand that behind every donation is a heartfelt commitment to South Australia having high-quality, locally produced theatre, and a belief that theatre changes lives in little and big ways. We are determined to put your support to good use in making phenomenal, transformative, and inclusive theatre that enriches South Australian and Australian culture.

## BEQUESTS

A bequest to the State Theatre Company South Australia leaves a legacy of support for theatre-making beyond your lifetime; it will help ensure that the next generations of South Australians can enjoy, and work in, professional theatre in our state. You can also consider a Living Bequest to kick-start the benefit of your bequest.

For more information on how you can be involved, contact us on 08 8415 5333 or [development@statetheatrecompany.com.au](mailto:development@statetheatrecompany.com.au)

# SUPPORT US

We welcome, and are thankful for, donations to State Theatre Company South Australia in whichever form they come. Donations can be made at the check-out point with ticket purchases, through our end-of-financial year giving campaign held in late May and June each year, at any time via the Support Us page on our website, or by calling our office on the number below.

The Company also runs a series of donor groups, which are open to anyone to join and which support an important aspect of the Company's work. Membership of any group includes special opportunities to further engage with new work in development, meet the artists behind the work being supported, pop into the rehearsal room, and meet people with a shared passion for the cause.

You can see the following groups recognised as supporting shows within the 2024 season in this brochure. Please feel free to give us a call or send us an email at [development@statetheatrecompany.com.au](mailto:development@statetheatrecompany.com.au) for more information, we would love to tell you more.

## COMMISSIONING COLLECTIVE

*Supporting the commissioning and creative development of new plays*

Commissioning is the process through which the Company engages a playwright to write a new play. As a Company dedicated to new South Australian and Australian stories on stage, commissioning and creatively developing new plays is at the heart of our work. As a member of this collective, you will be at the core of the Company's mission.

## DRAMATIC WOMEN

*Supporting productions featuring female-lead creatives*

Over more than twenty years, the Dramatic Women group has helped create an inspiring body of work by the best female theatre artists in South Australia and the nation, from established artists such as Robyn Archer, Sue Smith, and Anna Goldsworthy to (then) emerging playwrights like Lally Katz, Nikki Bloom and Michelle Law.

## MAJOR PRODUCTION FUND

*Supporting the creation of large productions*

In 2024, the Company will establish a Major Production Fund seeking contributions to allow us to continue to invest in large-scale, large-cast productions. Anchored around a major gift from one or more Fund Patrons, the Company aims to match those major gifts through other donations from a syndicate of Fund Supporters. We understand our audience wants us to aspire to greatness and deliver large-scale productions, and this Fund will substantially aid that cause.

## STATE EDUCATE COLLECTIVE

*Supporting our STATE EDUCATE Program*

Successive generations of South Australians have come to a love of theatre from attending State Theatre Company South Australia productions through school. Each year we subsidise tickets to at least 4,500 secondary students to attend our productions and offer an abundant program of skill and knowledge workshops, work experience and awards for students. State Educate Collective members provide vital support for us to continue this work.

Donations of \$2 or more are tax-deductible and all donations, big or small, make a difference.

# STATE GREATS

OUR WONDERFUL DONORS

## \$25,000+

Alexandra Dimos & Andrew Nunn  
Arts Projects Australia  
Sarah & Geoff Rohrsheim

## \$10,000+

Mitchell Butel  
Alison & David Smallacombe

## \$7,500+

Joe Thorp & Trish White

## \$5,000+

Tony & Gustie de Maaijer  
Andrew Grant  
Mango & Sam Hill-Smith  
Diané Ranck  
Jill Hill & Bob Warner

## \$2,500+

Dr Virginia Beal  
Rob Brookman AM & Verity Laughton  
Jane Doyle  
Diana Fry  
John & Rosemary Gumley  
Malcolm Gray QC & Laura Healy  
Dr Zenon Henzberg  
Julian Hobba  
Andrew Kamm  
Claudine Law  
Clayton Noble  
Andrew & Gayle Robertson  
Roger & Helen Salkeld  
Donald Sarah AM  
Nick and Irena Setchell  
Andrew Sweet

## \$1,000+

AET Foundation - Aldridge Family Endowment  
Rebecca Anderson & Simon Blewett  
John Bishop AO & Barbara Pidcock  
Kimberlee Brown  
Coralie Cheney  
Angela Cook  
Nicole and David Crawford  
Amy Daniell  
James Darling AM & Lesley Forwood  
Kay Dowling  
Dr Meridy Dunn & Dr Peter Allcroft  
Jason and Christine Dunstone

Christopher & Christine Guille  
Michael & Isobel Harry  
Jude Henshall  
Matt Hyde  
Kathryn House  
John & Kate Irving  
Anthony Keenan  
Anne Levy AO  
Dr Jane & Dr Trevor Mudge  
Bernie Pfitzner & Kate Logan  
Judy & George Potter  
J.C. & K.F. Kaye  
Roberts-Thomson  
Alice Rolls  
Rose Senesi  
Anne Simmons  
P&S Smith  
Andrew & Barbie Staniford  
Nigel Steele Scott  
Jenny & Sarah Strathearn  
Lisa Temple & Dr Peter Goldsworthy AM  
Tarnya Van Driel  
Sandra & Victor Velgush  
Simon White

## TRUSTS & FOUNDATIONS

AET Foundation - Aldridge Family Endowment  
Australian Executor Trustees  
FWH Foundation  
James and Diana Ramsay Foundation  
Nunn Dimos Foundation  
State Theatre Company South Australia Foundation

## COMMISSIONING COLLECTIVE

Mitchell Butel  
Rob Brookman AM  
Jane Doyle  
Malcolm Gray QC  
Christopher Guille  
Jill Hill  
Mango Hill-Smith  
Sam Hill-Smith  
Julian Hobba  
Verity Laughton  
Andrew & Gayle Robertson  
Don Sarah  
Bob Warner

## DRAMATIC WOMEN

Libby Burns  
Christine Guille

Laura Healy  
Glenys Jones OAM  
Kate Logan  
Pamela McKee  
Kathryn Needs  
Bernie Pfitzner  
Maria Panagiotidis  
Nicolle Rantanen Reynolds  
Diané Ranck  
Alison Smallacombe  
Sue Kitchener  
Judy Underdown

## STATE EDUCATE COLLECTIVE

Alison & David Smallacombe  
Michael & Isobel Harry  
Andrew Grant  
Diané Ranck

## 2023 GOLD SUBSCRIBERS

David & Nicole Crawford  
Irene Doskatsch  
Kay Dowling  
Valdis Dunis  
Meridy Dunn & Peter Allcroft  
Jason & Christine Dunstone  
Lynette Edwards  
Dr Peter Goldsworthy AM & Lisa Temple  
Malcolm Gray QC & Laura Healy  
John & Rosemary Gumley  
John & Kate Irving  
Jill Hill & Bob Warner  
Mango & Sam Hill-Smith  
Anthony Keenan  
Anne Levy AO  
Trevor & Jane Mudge  
Diané Ranck  
Andrew & Gayle Robertson  
Sarah & Geoff Rohrsheim  
Roger & Helen Salkeld  
Nick & Irena Setchell  
Alison & David Smallacombe  
Andrew & Barbie Staniford  
Jenny & Sarah Strathearn  
Tarnya Van Driel  
Sandra & Victor Velgush

## LEGACY DONORS

Anonymous (3)  
Victoria and Thomas Bridgland  
Rob Brookman  
Mitchell Butel  
June Miller

Marjorie Molyneux  
Maria Panagiotidis  
Diane Ranck  
Anne Roman  
Merry Wickes

*We sincerely thank all those who have made donations and offered support to State Theatre Company South Australia over the past year, including the hundreds of people who made donations under \$1,000. This list reflects donations made from 1 July 2022 to 1 August 2023.*

# STATE ACCESS

We are committed to giving all South Australians the opportunity to share the experience of theatre.

A large text and screen reader-friendly version of this brochure is available for download from [statetheatrecompany.com.au/access](http://statetheatrecompany.com.au/access)

## AUDIO DESCRIPTION

Audio-described performances for blind and vision-impaired audience members include pre-show tactile tours of the props and costumes, description of the set and staging, and introduction to the actors. Audio information is published on our website before the performance.

## CAPTIONED PERFORMANCE

We present captioned performances on select dates in the Dunstan Playhouse. Dialogue is displayed in real-time on screens next to the stage during the performance. Please indicate on your booking form if you require a caption-accessible seat.

## AUDIO ENHANCEMENT

A Beyerdynamic Hearing System is available at the Dunstan Playhouse for patrons requiring hearing assistance. Transmitter packs are available to borrow from the Box Office in the Dunstan Playhouse foyer 30 minutes before the performance. You may also bring your headphones.

Please contact us directly at 08 8415 5333 or email [tickets@statetheatrecompany.com.au](mailto:tickets@statetheatrecompany.com.au) if you have any questions about this program or require assistance with your booking.

Visit [statetheatrecompany.com.au](http://statetheatrecompany.com.au) for all our Equal Access ticket options.

## WHEELCHAIR ACCESS

Theatres are wheelchair accessible. Please indicate on your booking form if you require a wheelchair-accessible seat.

## CARERS

We offer a complimentary companion ticket for Companion/Carer Card holders who attend performances with a patron requiring access support. Reserve your companion tickets on the booking form.

See the Calendar on pages 39-40 for dates and times of audio-described and captioned performances.

## EQUAL ACCESS TICKETS

State Theatre Company South Australia offers several Equal Access ticket initiatives for unwaged people, and low-income earners with a Health Care Card.

## COMMUNITY NIGHTS

We hold regular Community Nights and provide ticket offers to First Nations and specific community audience groups to experience our productions and make our season accessible to everyone.

# SUBSCRIPTION PRICING

Purchase four plays or more to access the generous discounts on single ticket prices. You'll receive the best seats in the house and save up to 20% off our standard single ticket prices.

BLUE	Adult		Senior		Concession		Under 30 / Student	
	Evening	Preview/ Matinee	Evening	Preview/ Matinee	Evening	Preview/ Matinee	Evening	Preview/ Matinee
7 Play	\$68.00	\$60.00	\$65.00	\$57.00	\$60.00	\$52.00	\$35.00	\$35.00
6 Play	\$70.00	\$61.50	\$66.50	\$58.50	\$61.50	\$53.30	\$35.00	\$35.00
5 Play	\$71.50	\$63.00	\$68.50	\$60.00	\$63.00	\$54.60	\$35.00	\$35.00
4 Play	\$73.50	\$64.50	\$70.00	\$61.50	\$64.50	\$55.90	\$35.00	\$35.00

THE CHILDREN THE QUESTIONS JULIA THE PUZZLE JACK MAGGS	Adult		Senior		Concession		Under 30 / Student	
	Evening	Preview/ Matinee	Evening	Preview/ Matinee	Evening	Preview/ Matinee	Evening	Preview/ Matinee
7 Play	\$76.00	\$68.00	\$73.00	\$65.00	\$68.00	\$60.00	\$35.00	\$35.00
6 Play	\$78.00	\$70.00	\$75.00	\$66.50	\$70.00	\$61.50	\$35.00	\$35.00
5 Play	\$80.00	\$71.50	\$76.50	\$68.50	\$71.50	\$63.00	\$35.00	\$35.00
4 Play	\$82.00	\$73.50	\$78.50	\$70.00	\$73.50	\$64.50	\$35.00	\$35.00

CANDIDE	Adult		Senior		Concession		Under 30 / Student	
	Evening/Preview/Matinee		Evening/Preview/Matinee		Evening/ Preview Matinee		Evening/ Preview Matinee	
A Reserve 7,6,5 & 4 Play	\$118.50		\$115.00		\$106.50		\$35.00	
B Reserve 7,6,5 & 4 Play	\$93.50		\$90.00		\$84.50		\$35.00	
C Reserve 7,6,5 & 4 Play	\$64.00		\$60.00		\$57.40		\$35.00	

Subscription packages incur an \$9.25 processing fee per Subscriber.

	7 PLAY	6 PLAY	5 PLAY
Gold Subscription	\$1,400	\$1,290	\$1,180

Gold Subscriptions are strictly limited to 50 packages and include a \$630 tax-deductible donation. Gold subscriptions can be booked via phone, email or post.

# SINGLE TICKET PRICING

SYMPHONIE OF THE BICYCLE		
	Evening	Preview / Matinee
Adult	\$75.00	\$65.00
Concession	\$65.00	\$55.00
Under 30s/Full Time Student	\$35.00	\$35.00

BLUE		
	Evening	Preview / Matinee
Adult	\$85.00	\$75.00
Concession	\$75.00	\$65.00
Under 30s/Full Time Student	\$39.00	\$39.00

THE CHILDREN / THE QUESTIONS / JULIA / THE PUZZLE / JACK MAGGS		
	Evening	Preview / Matinee
Adult	\$95.00	\$85.00
Concession	\$85.00	\$75.00
Under 30s/Full Time Student	\$49.00	\$39.00

CANDIDE		
	ADULT (All performances)	CONCESSION (All performances)
Premium	\$159.00	\$143.10
A Reserve	\$139.00	\$125.10
B Reserve	\$110.00	\$99.00
C Reserve	\$75.00	\$67.50
Under 30s / Full Time Student	\$35.00	\$35.00

Please call our Ticket Office on (08) 8415 5353 for all ticketing enquiries.

Single ticket bookings via State Theatre Company South Australia incur an \$9.25 per transaction fee. Standard priced single tickets go on sale 1 Dec 2023. Ticket prices are subject to change without notice and may fluctuate based on market demand. Current pricing can be found at [statetheatrecompany.com.au/prices-ticket-types/](http://statetheatrecompany.com.au/prices-ticket-types/)

CALENDAR

THE CHILDREN Dunstan Playhouse						
Monday	Tuesday	Wednesday	Thursday	Friday	Saturday	Sunday
29 Jan 6pm (SUB)	-	-	-	2 Feb 7:30pm (P)	3 Feb 7:30pm (P)	-
5 Feb 6:30pm (P)	6 Feb 7:30pm (O)	7 Feb 6:30pm	8 Feb 7:30pm	9 Feb 7:30pm	10 Feb 2pm	-
12 Feb 6:30pm (QA)	13 Feb 6:30pm	14 Feb 11am (QA) (DWS) 6:30pm	15 Feb 7:30pm	16 Feb 7:30pm	17 Feb 2pm 7:30pm	-

BLUE Scott Theatre						
Monday	Tuesday	Wednesday	Thursday	Friday	Saturday	Sunday
-	-	-	-	23 Feb 8pm (P)	24 Feb 8pm (P)	-
26 Feb 8pm (P)	27 Feb 8pm (O)	28 Feb 8pm	29 Feb 8pm	1 Mar 8pm	2 Mar 8pm	-
4 Mar 8pm	5 Mar 8pm	6 Mar 8pm	7 Mar 8pm	8 Mar 8pm	9 Mar 2pm	-
11 Mar 2pm	12 Mar 8pm  (QA)	13 Mar 8pm	14 Mar 8pm	15 Mar 8pm	16 Mar 2pm 8pm	-

CANDIDE Her Majesty's Theatre						
Monday	Tuesday	Wednesday	Thursday	Friday	Saturday	Sunday
20 May 6pm (SUB)	-	-	23 May 7:30pm	24 May 7:30pm	25 May 2pm 7:30pm	-

THE QUESTIONS Space Theatre						
Monday	Tuesday	Wednesday	Thursday	Friday	Saturday	Sunday
22 Jul 6pm (SUB)	-	-	-	26 Jul 7:30pm (P)	27 Jul 7:30pm (P)	-
29 Jul 6:30pm (P)	30 Jul 7:30pm (O)	31 Jul 6:30pm	1 Aug 7:30pm	2 Aug 7:30pm	3 Aug 2pm	-
5 Aug 6:30pm  (QA)	6 Aug 6:30pm	7 Aug 6:30pm	8 Aug 7:30pm	9 Aug 7:30pm	10 Aug 2pm 7:30pm	-
12 Aug 6:30pm	13 Aug 6:30pm	14 Aug 11am (QA) (DWS) 6:30pm	15 Aug 7:30pm	16 Aug 7:30pm	17 Aug 2pm 7:30pm	-

JULIA Dunstan Playhouse						
Monday	Tuesday	Wednesday	Thursday	Friday	Saturday	Sunday
-	13 Aug 6pm (SUB)	-	-	16 Aug 8pm (P)	17 Aug 8pm (O)	-
19 Aug 6:30pm	20 Aug 6:30pm	21 Aug 6:30pm	22 Aug 7:30pm	23 Aug 7:30pm	24 Aug 2pm	-
26 Aug 6:30pm  (QA)	27 Aug 11am (QA) 6:30pm	28 Aug 6:30pm	29 Aug 7:30pm	30 Aug 7:30pm	31 Aug 2pm 7:30pm	-

THE PUZZLE Dunstan Playhouse						
Monday	Tuesday	Wednesday	Thursday	Friday	Saturday	Sunday
16 Sep 6pm (SUB)	-	-	-	20 Sep 7:30pm (P)	21 Sep 7:30pm (P)	-
23 Sep 6:30pm (P)	24 Sep 7:30pm (O)	25 Sep 6:30pm	26 Sep 1:00pm 7:30pm	27 Sep 7:30pm	28 Sep 2pm	-
30 Sep 6:30pm (QA)	1 Oct 6:30pm	2 Oct 11am (DWS) (QA) 6:30pm	3 Oct 7:30pm	4 Oct 7:30pm	5 Oct 2pm 7:30pm	-
-	8 Oct 6:30pm	9 Oct 1pm 6:30pm	10 Oct 7:30pm	11 Oct 7:30pm	12 Oct 2pm 7:30pm	-

JACK MAGGS Dunstan Playhouse						
Monday	Tuesday	Wednesday	Thursday	Friday	Saturday	Sunday
11 Nov 6pm (SUB)	-	-	-	15 Nov 7:30pm (P)	16 Nov 7:30pm (P)	-
18 Nov 6:30pm (P)	19 Nov 7:30pm (O)	20 Nov 6:30pm	21 Nov 7:30pm	22 Nov 7:30pm	23 Nov 2pm	-
25 Nov 6:30pm  (QA)	26 Nov 6:30pm	27 Nov 11am (DWS) (QA) 6:30pm	28 Nov 7:30pm	29 Nov 7:30pm	30 Nov 2pm 7:30pm	-

STATE EDUCATE

SYMPHONIE OF THE BICYCLE Space Theatre						
Monday	Tuesday	Wednesday	Thursday	Friday	Saturday	Sunday
-	14 May 7:30pm (O)	15 May 1pm	16 May 7:30pm	-	18 May 2pm 7:30pm	-
-	-	22 May 6:30pm	23 May 7:30pm	24 May 7:30pm	25 May 2pm 7:30pm	-

- AUDIO DESCRIBED Includes a tactile tour and discussion with the actors
- CAPTIONED PERFORMANCE Text of the play displayed on the screens next to the stage
- (DWS) A Date With State performances supported by Office for Ageing Well. See page 31 for details.
- (SUB) SUBSCRIBER BRIEFING Behind the scenes insights from the directors, actors and creative team
- (O) OPENING NIGHT The exclusive debut of the first show for Gold Subscribers, media and partners
- (P) PREVIEW First public performances prior to opening night
- (QA) QUESTION & ANSWER Post-show discussion with the cast



Get MORE out of life



**1300 275 324**  
**ech.asn.au**

Proud sponsor of State Theatre Company South Australia



# A 150-year legacy in the limelight

For a century and a half, the University of Adelaide has been driving the arts sector in South Australia and beyond. We're proud to make history every day by championing creativity, amplifying artistic potential, and forging industry connections for the arts leaders of tomorrow. When you leave our doors, the world becomes your stage.



PRV12106 CRICOS 00123M



THE UNIVERSITY  
of ADELAIDE

**make  
history.**

# Find your Fearless

## Study Performance at Flinders

**ACTING | DIRECTING | THEATRE MAKING**

**Take your place on stage, on screen or behind the scenes.**

Flinders Performance degrees span acting, directing and theatre making, and have been designed in consultation with industry. Our teachers are highly skilled creative practitioners who work closely with partners such as the State Theatre Company South Australia, the Adelaide Festival Centre, Heesom Casting, Channel 44 and others.



Find Out More

[Flinders.edu.au/performance](https://flinders.edu.au/performance)



Flinders  
University

CREDIT: No. 00144

# WE THINK DIFFERENTLY

Proud 2024 State Theatre Company South Australia  
New Works Partner, supporting the role of arts in  
educating and shaping future audiences.

water<sup>n</sup>ish

[waternish.com.au](https://waternish.com.au)

# novatech

**Empower creativity via event technology.**



[ncet.co](https://ncet.co)

## my other address

[adinahotels.com](https://adinahotels.com)

Spacious studios, 1 and 2 bedroom self-contained apartments with hotel service  
in central locations across Australia, New Zealand and Europe.

15% off fully flexible rates for State Theatre subscribers at Adina Apartment Hotel  
Adelaide Treasury. Book now using promo code: TH8226883

Proud sponsor of State Theatre Company South Australia.

Adina Apartment Hotel  
Adelaide Treasury

Adina

## BOARD

Kimberlee Brown  
Jude Henshall  
David O'Loughlin  
Diané Ranck  
Alice Rolls  
Joe Thorp (Chair)  
Holly Veale  
Gavin Wanganen

## STATE THEATRE COMPANY SOUTH AUSTRALIA FOUNDATION

Coralie Cheney  
Jude Henshall  
Matt Hyde  
Diané Ranck  
Sarah Rohrsheim  
Alice Rolls  
Rose Senesi  
Andrew Sweet (Chair)  
Simon White

## EXECUTIVE

**ARTISTIC DIRECTOR**  
Mitchell Butel

**EXECUTIVE DIRECTOR**  
Julian Hobba

## ARTISTIC

**ARTISTIC PROGRAM MANAGER**  
Shelley Lush

**ARTISTIC ASSOCIATE**  
Shannon Rush

**ARTIST IN RESIDENCE**  
Kyron Weetra

**COMMISSIONED WRITERS**  
Samuel Adamson  
Van Badham  
Elena Carapetis  
Anna Goldsworthy  
Verity Laughton  
Meow Meow  
Emily Steel  
Kyron Weetra  
Alexis West  
Richard Wise

## EDUCATION

**EDUCATION PROGRAM MANAGER**  
Fiona Lukac

## FINANCE & ADMINISTRATION

**HEAD OF FINANCE &  
BUSINESS ADMINISTRATION**  
Scott Grimes

**FINANCE OFFICER**  
Inez Raspoet

**OFFICE COORDINATOR**  
Caitlin Hendrey

## MARKETING & DEVELOPMENT

**HEAD OF MARKETING &  
BUSINESS DEVELOPMENT**  
Kristy Rebbeck

**MARKETING EXECUTIVE**  
Jessica Zeng

## PUBLICIST

Sophie Potts

**GRAPHIC DESIGN &  
CONTENT COORDINATOR**  
Rachel Bell

**CREATIVE SERVICES ADVISOR**  
Matt Byrne

**DEVELOPMENT EXECUTIVE**  
Alyssa Franceschini (Maternity leave)  
Peta-Anne Louth

**DEVELOPMENT COORDINATOR**  
Christine Bruderhans

## TICKETING

**TICKETING EXECUTIVE**  
Rosie George

**TICKETING COORDINATOR**  
Rynn Ellison

## PRODUCTION

**HEAD OF PRODUCTION & TECHNICAL**  
Gavin Norris

**PRODUCTION MANAGER**  
Gabrielle Hornhardt

**WORKSHOP SUPERVISOR**  
Areste Nicola

**LEADING HAND**  
Patrick Duggin

**CARPENTER/METAL WORKER**  
Guy Bottroff  
Grant Petrussevis

**PROPS COORDINATOR**  
Stuart Crane

**SCENIC ART**  
Sandra Anderson  
Mia Reschke

**PROP SHOP**  
Robin Balogh

**WORKSHOP CASUALS**  
Michael Ambler  
Elias Ppiros  
Joshua Stocker  
Ben Brooks

**HEAD OF SOUND/  
RESIDENT SOUND DESIGNER**  
Andrew Howard

**PRODUCTION ELECTRICIAN**  
Alexander Ramsay

## WARDROBE

**HEAD OF WARDROBE**  
Kellie Jones

**WARDROBE PRODUCTION  
SUPERVISOR/BUYER**  
Enken Hagge

**SHOW SUPERVISOR &  
COSTUME MAKER**  
Martine Micklem

**WIGS, MAKE UP &  
COSTUME HIRE**  
Jana DeBiasi

## BROCHURE

### ART DIRECTION, KEY ART & BROCHURE DESIGN

Jeff van de Zandt  
Nadia Gianinotti  
(Workshop Creative)

**KEY ART PHOTOGRAPHER**  
Benny Capp

**PRINTING**  
Print Solutions

## SUBSCRIPTIONS & TICKETING

Kaurna Country  
Wigg & Sons Building  
Access via 30 Walsh St,  
Thebarton SA 5031

Ph 08 8415 5353

Email  
subscriptions@statetheatrecompany.  
com.au

Open Mon – Fri 10am to 4pm

From Oct 2023 – Feb 2024

**Please ph 08 8415 5333 before  
visiting outside of these hours**

*Parking is available*

## ADMINISTRATION

Kaurna Country  
Lion Arts Centre  
Level 1, Fowlers Building,  
Corner Morphett St and North Tce,  
Adelaide SA 5000

Ph 08 8415 5333

Email info@statetheatrecompany.  
com.au

## PRODUCTION (including prop and costume hire)

Kaurna Country  
Wigg & Sons Building  
Access via 30 Walsh St,  
Thebarton SA 5031

Ph 08 8415 5351

Email  
propshop@statetheatrecompany.  
com.au

## KEEP IN TOUCH



Facebook, Twitter, Instagram:  
@StateTheatreSA #STCSA  
statetheatrecompany.com.au

# CELEBRATING THE SUPPORT OF OUR PARTNERS

## GOVERNMENT PARTNERS



State Theatre Company South Australia is assisted by the Australian Government through Creative Australia, its principal arts investment and advisory body.

## PRESENTING PARTNERS



## ASSOCIATE PARTNERS



## EDUCATION PARTNERS



## CORPORATE PARTNERS



## ACCESS PARTNERS



Thank you to T BAR TEA SALON for their ongoing support of State Theatre Company South Australia

## MEDIA PARTNERS



## CREATIVE PARTNERS



## TRUSTS AND FOUNDATIONS



## DONOR GROUPS

