



GONE TO PRESS

SEASON 2007

GONE
TO PRESS

belong



"the purpose of playing is to hold, as 'twere, the mirror up to nature; to show virtue her own feature, scorn her own image, and the very age and body of the time his form and pressure..."



welcome

Theatre is an extreme and intense medium. It tends to be either wonderful or dire. If it doesn't have you on the edge of your seat, it makes you wish you'd rather not be in that seat at all. When it is good, it is very, very good and when it is bad, well 'sigh' ...

Nothing can demonstrate and question what it means to be human in quite the way that theatre can, because theatre's medium is living, breathing, speaking humanity itself. That plays continue to be written and performed is enduring proof that, all indications to the contrary, our voices matter to each other; that we do wonder what goes on inside each other's heads; that we want to know each other, and we want to be known. Nothing is more meaningful - more human, really - than our efforts to tell each other the story of ourselves, of what it's like to be who we are, to think the things we think, to live the lives we live. Theatre is what that most enlightened of South Australian Premiers, Don Dunstan, called "a quintessentially human and involving pursuit".

The business of the artist is to remind us of our shared, troubled humanity, to bear witness to our roaring and chaotic present, but also to celebrate us at our best. In a poem called "The Blossom", John Donne spoke of "my naked, thinking heart", and doesn't that describe exactly what artists express in their best work? You can hear their heart beat *and* you can hear them think, as though they were one and the same process.

Here at State Theatre Company we offer you a fresh take on the world and a renewed sense of being alive in your own skin. You can live a life of wildest adventure without ever leaving your seat! So please join us in 2007 for a dozen wild and unforgettable adventures in the dark. Theatre might not change your soul, but at the very least it will make you glad you have one.

ADAM COOK, ARTISTIC DIRECTOR

why subscribe?

save money

Save well over \$200 on a pair of adult 7-play subscriptions.

hurry! for one month only, subscribers get the best seats in the house

All subscribers have priority on the best seats in the house. From 20 October to 10 November, we exclusively process our current 2006 subscribers' forms. From 13 November we process all other new subscriber forms. Subscriptions are available for purchase until the end of July 2007.

you won't miss out

In 2006, many State Theatre Company shows sold out. As a subscriber you can feel confident you won't miss any of the best theatre in town!

discounted guest tickets

Buy extra tickets for friends and guests at a generously discounted rate.

plan ahead

Plan your whole year of theatre entertainment right now and if the unexpected crops up we offer one free ticket exchange per subscriber per year.

pay in instalments

Subscribers can spread the cost over two separate payments, one now and the balance on 8 January 2007.

stay up to date

Receive all of the latest news and backstage gossip through our quarterly Fresh Inc. newsletter.

pre-book car parking

Subscribers can pre-book car parks for \$11 per night for the Adelaide Festival Centre Car Park.

discounted play programs

Save money off the regular retail price when you pre-book.

under 30?

subscribe now and win

State Theatre Company offers youth subscribers the chance to take a friend to the theatre for free! Simply be one of the first 50 people to purchase a youth subscription package and we will match it with a free State Theatre Company Curtain Raiser Subscription.

meet the actors at free play briefings

Enjoy a complimentary glass of wine with us as you meet the director, creative team and actors at exclusive subscriber briefings for all of our plays. Please refer to the performance guide pages 33 - 35 for dates.

present your subscriber card and save

20% DISCOUNT on meals at the restaurants in the Stamford Plaza and Stamford Grand hotels. Bookings essential.

10% DISCOUNT on your entire bill at Tutto Ku - Dunstan Playhouse and Parlamento - North Terrace. Bookings essential.

10% DISCOUNT at Imprints Booksellers - Hindley St, the SA Museum Shop - North Terrace and B# Records - Rundle St (on music and DVDs only)

CONCESSION priced tickets at Wallis Cinemas.



the great indoors

single tickets in 2007

If you wish to buy individual tickets to State Theatre Company productions in 2007, you may do so from 27 November by:

- phoning BASS on 131 246
- visiting www.statetheatrecompany.com.au
- visiting a BASS outlet

prices

Evening performances range from \$50-\$60

Previews, Sunsets, Matinees range from \$45-\$55

(Please refer to page 39 for all single ticket prices for 2007)

fringe benefits

Are you under 30 and looking for discounted State Theatre Company tickets? Join Fringe Benefits and access \$25 tickets for all State Theatre Company shows (subject to availability). For your free membership, visit www.fringebenefits.com.au

making a positive difference to our society - isn't that what theatre is all about?

Thanks to your support, State Theatre Company of South Australia plays a pivotal role in promoting an exciting and diverse range of new voices in this State.

We can all celebrate in the success of the world premiere production of our new Australian work for the 2006 Adelaide Bank Festival of Arts, *Honk If You Are Jesus* by Peter Goldsworthy and Martin Laud Gray, and share the joy of the outstanding response to our centenary production of Samuel Beckett's *Waiting for Godot* directed by STCSA Associate Director, Michael Hill. These landmark South Australian productions were directly supported by you - our Company of Players.

In 2007 we will build upon our successes with the nurturing of exciting visionary writers and with the world premiere of the thrilling new Australian play *Lion Pig Lion*. As Artistic Director, my vision is to enrich our cultural life with unique and exceptional theatre, honour its traditions and break new ground, inspiring audiences and artists alike.

Your gifts, donations and bequests directly support the staging of new works, career development opportunities for emerging South Australian artists, acting workshops, creative fellowships, education and mentoring programs designed to foster the creative excellence of the next generation of theatre practitioners.

Your support will forge meaningful creative links to the future and enable our Company to channel more resources to the very important work of artistic development, into projects that nurture the imagination, curiosity and passion of emerging and established South Australian artists. Your investment in the Company, in your Company, makes it possible for the visions and voices of our theatrical future to be seen and heard.

I encourage you to join our Company of Players.

The rewards are immeasurable.

Thank you.

ADAM COOK
ARTISTIC DIRECTOR

your donation become a company player

Make a donation and belong to our Company of Players. All supporters at The Friends level and above receive special invitations to backstage activities. All donations of \$250 or more are listed in play programs and our Annual Report.

- STATE THEATRE GUARDIAN (Bequests)
- THE LEAD ROLE - PREMIER PATRON
- FEATURED PLAYERS (\$5,000+)
- PATRONS (\$1,000+)
- MEMBERSHIP GROUPS (\$550+)
- STAGE HANDS (\$250+)
- THE FRIENDS (\$50+)



membership groups

DOCTORS IN THEATRE, DRAMATIC WOMEN + MEN AT WORK

Join one of these groups of Arts enthusiasts who collectively support major productions throughout the year. Membership includes 2 opening night tickets to your aligned production with hospitality, full page listing of members in the nominated play program and invitations to functions throughout the year. Combine your membership/donation with a 5 or 6 play season subscription.

Doctors In Theatre	proudly supporting	<i>Hamlet</i>
Dramatic Women	proudly supporting	<i>Triple Threat</i>
Men At Work	proudly supporting	<i>Lion Pig Lion</i>

gold subscriptions/opening nights

Combine your donation with an exclusive opening night ticketing and hospitality package and become a Gold Subscriber. Packages start at \$600 for 5 plays.

Please contact Tess Syme or Kate O'Donoghue in our Development Department on (08) 8231 5151 or email kate@statetheatrecompany.com.au or tess@statetheatrecompany.com.au to discuss your donation and any Gold Subscription or Membership Group requirements.

All donations over \$2 are fully tax deductible under State Theatre Company's listing on the Register of Cultural Organisations under Subdivision 30-B of the ITAA (1997).

PRESENTED BY BRINK PRODUCTIONS AND STATE THEATRE COMPANY OF SOUTH AUSTRALIA

In association with The Firm and Adelaide Festival Centre's iNSPACE program

1 this uncharted hour

WORLD PREMIERE

By Finegan Kruckemeyer

Winner of the 2006 Jill Blewett Playwright's Award

this uncharted hour tells the spiralling narrative of a family across two generations, unveiling how, in a single moment, an unexpected event can shatter the surface of our lives.

Luka is driving to meet friends when an accident leaves him shaken but unharmed. This seemingly innocent event steers him unexpectedly to the house where he grew up, now long since abandoned. As he moves from room to room releasing the ghosts and memories within its walls, Luka finds himself confronting a long held family secret.

An exhilarating fusion of theatre and music, *this uncharted hour* shifts seamlessly between the past and present, creating a richly visceral world of raw emotion and theatrical magic.

Contains some nudity and coarse language.

STARRING	Michaela Cantwell Elena Carapetis Nathan O'Keefe
SINGER	Emma Horwood
PIANIST	Jamie Cock
DIRECTOR	Chris Drummond
DESIGNER	Gaelle Mellis
LIGHTING	Geoff Cobham
COMPOSERS	Raymond Chapman-Smith Quentin Grant



9 - 24 FEBRUARY THE SPACE



2

hamlet

By William Shakespeare

*... What would he do,
Had he the motive and the cue for passion
That I have?*

Hamlet is one of Shakespeare's most powerful plays. Actors love it and audiences are engrossed by it. It's a ghost story, a political thriller, an action-packed murder mystery and a great tragedy that's profoundly moving. *Hamlet* says everything about life that there is to be said. As a meditation upon human fragility in confrontation with death, it competes only with the world's scriptures.

How do you live? What happens when you die? And how, if it all, will you be remembered? *Hamlet* offers the most concentrated and haunting exploration of such questions anywhere in the history of Western literature or philosophy. Hamlet is someone who has looked into the very depths of what it is to be human. His struggle to make some sense of it all, indeed our struggle, is of profound importance. This miraculous play, so deep, intense and true, gives that search for meaning a profoundly eloquent voice and places it centre stage.

Join us for an epic journey into the heart and soul of one troubled young man.

STARRING	Cameron Goodall Barbara Lowing Joss McWilliam Daniel Murphy Dennis Olsen Sean Taylor Emily Tomlins
DIRECTOR	Adam Cook
SET DESIGNER	Bruce McKinven
COSTUME DESIGNER	Kathryn Sproul
LIGHTING	Gavan Swift
COMPOSER	Brett Coltery

supported by

doctors
in Theatre



30 MARCH - 21 APRIL THE DUNSTAN PLAYHOUSE

PHOTO: SHANE REID

*so shall you hear
Of carnal, bloody, and unnatural acts,
Of accidental judgements, casual slaughters,
Of deaths put on by cunning and forced cause,
And, in this upshot, purposes mistook
Fall'n on the inventors' heads: all this can I
Truly deliver.*

3

triple threat

A Triple Bill

Prepare yourselves for an evening of 'excess all areas' by experts in the genre. Three one-act plays examining the trip hazards of intimacy and the dark forces at work beneath those we think we know. At the helm, three dynamic, exciting directors new to our Company, so join us for a road trip up the lost highway of 21st century life - sometimes poetic and moving, at others unsettling and shocking and, always, just a little 'bent'...

TALK TO ME LIKE THE RAIN AND LET ME LISTEN...

By Tennessee Williams

PRESENTED THROUGH SPECIAL ARRANGEMENT WITH THE UNIVERSITY OF THE SOUTH, SEWANEE, TENNESSEE.

DIRECTED BY NETTA YASHCHIN

"We may be designed to fall in love but we're not designed to stay there."

In this exquisite miniature, a haunting, poetic meditation on love and the lovelorn, a young woman dreams of escaping the world she knows, while her alcoholic lover lies in a bath full of melting ice. A bittersweet study of innocence, experience and addiction, this promises to be a gem of visual and physical theatre.

HOT FUDGE

By Caryl Churchill

DIRECTED BY GEORDIE BROOKMAN

"What was that about a breakdown?"

Four fast-talking scenes set in a pub, a wine bar and a private club capture present-day hustlers of various classes and nationalities. From good old-fashioned thieves right through to sophisticated credit-card frauds and real-estate speculators, Churchill shows how they're all part of the same Anglo-empire of multi-national corporations and currency shifts.

CENTRAL PARK WEST

By Woody Allen

DIRECTED BY HANNAH ALLERT

"Grow up, Sam - she shot you in the ass - it's called rejection!"

A comic look at two wealthy New York couples whose relationships are simmering cauldrons of dysfunction. Celebrated psychoanalyst Phyllis discovers her husband Sam is not only divorcing her but has also slept with almost every woman she knows - including the one-legged neighbour in the apartment below. Meanwhile Carol and Howard are enmeshed in their own emotional struggle intrinsically linked to Sam and Phyllis...

6 - 28 JULY THE DUNSTAN PLAYHOUSE

supported by

Dramatic Women



DESIGNER	Mary Moore
LIGHTING	Mark Pennington
SOUND	Catherine Oates

WORLD PREMIERE

Shortlisted for the Patrick White
Playwrights' Award 2005

4

LionPigLion

By Marty Denniss

Corridors, lifts, saunas and car parks - that's where this company's contracts are negotiated. Virginia and Sidney are doing their level best to navigate a maze of hard-hitters, fast-talkers and pokerfaced dealmakers, but when the guy from the commission starts poking around asking difficult questions, everyone realises that there's more at stake than just their jobs.

On the other side of the world, a security guard shoots a young man who works at a water plant owned by the company. An investigation is set up to find out who's responsible. Back in Australia, the employees plead ignorance but are they somehow responsible for the young man's death? The investigation is bound to sort the sheep from the goats.

Everyone has something to hide. And everyone is prepared to reveal that something for a price. It's all about exchange.

From the sharp-witted writer of *The Duck Shooter* comes a high-speed journey into the lives of ordinary and ruthless people making and breaking contracts with themselves and each other, set against a backdrop of brokered deals between the heads of a large company and the people of a small nation.

Praise for Marty Denniss' previous work:

"...gripping and memorable..."

MURRAY BRAMWELL, THE AUSTRALIAN

*"...the writing of Marty Denniss
is a powerful and determined
engine..."*

ALEX WHEATON, dB MAGAZINE

supported by

MEN AT WORK

STARRING	Michaela Cantwell Brant Eustice Carmel Johnson
DIRECTOR	Michael Hill
DESIGNER	Victoria Lamb
LIGHTING	Nic Mollison
COMPOSER	Stuart Day

10 AUGUST - 1 SEPTEMBER THE DUNSTAN PLAYHOUSE



A SYDNEY THEATRE COMPANY PRODUCTION

5

doubt

Winner 2005 Pulitzer Prize for Drama
Winner of four Tony Awards
including Best Play

By John Patrick Shanley

Taut, spellbinding, magnificently crafted and compelling in its relevance, *Doubt* is the most acclaimed play in New York in a decade.

It is 1964. Sister Aloysius oversees a large Roman Catholic school, with an eye to her pupils' souls as much as their books. A woman with a reputation for tenacity and flinty resolve, she inhabits a world of black-and-white, truth and lies. So when she begins to harbour doubts about the parish priest Father Flynn - and his closeness to altar boys - she pursues her quarry with determination and steely-eyed certainty.

The misgivings of colleagues, the protestations of parents and the confident denials of the priest himself have no effect. Aloysius seems a woman who has the courage to uphold standards when it would be easier to avert her gaze. She makes it clear that she will not be swayed from the pursuit of justice. But she builds the case against her colleague from the inside out, based only on the strength of her conviction.

Is Father Flynn a predator? Or is Sister Aloysius, acting on a vendetta that even she may not fully understand, unjustly persecuting him?

From one of the finest writers of the modern American stage comes a marvellous new play, a sophisticated deliberation on blind faith and moral certainty.

"It is the richest piece of
theatre we've had in years."
NEW YORK DAILY NEWS

"Remarkable, moving and
powerful... brilliantly engrossing"
SYDNEY MORNING HERALD

STARRING	Jennifer Flowers Pamela Jikiemi
DIRECTOR	Julian Meyrick
DESIGNER	Stephen Curtis
LIGHTING	Matt Scott
COMPOSER	Max Lyandvert

5 - 22 SEPTEMBER THE DUNSTAN PLAYHOUSE

PHOTO: SYDNEY THEATRE COMPANY



Lyrebird:

TALES OF HELPMANN

By Tyler Coppin

Tyler Coppin transforms himself into one of Australia's first international art heroes - the pocket sized genius of outrage and bravado, Sir Robert Helpmann - as he chronicles Bobby's life from the seclusion of the dressing room to the suburbs of Sydney.

Caught between acts of the ballet *Don Quixote*, an aging Robert Helpmann fights his demons while recounting a life in the theatre which began as a young ballet dancer from Mt Gambier, South Australia.

He takes us from his precocious beginnings on his father's station and getting expelled from Prince Alfred College to dance classes in Adelaide, a rapid rise in London, the triumphs, the famous names - Fonteyn, Nureyev, Hepburn - and the lavish lifestyle that came with being Bobby.

Fantasy and reality weave together to create a night as flamboyant and colourful as Sir Robert's own life. *Lyrebird: Tales of Helpmann* is as screamingly funny as it is genuinely moving.

"Spellbinding" TIME

"exotic and eccentric... weird and wondrous" SHERIDAN MORLEY,
INTERNATIONAL HERALD TRIBUNE

"Coppin's superb portrayal is hilarious, deeply touching and hugely entertaining"
THE SCOTSMAN

Please note: This production contains smoking

STARRING	Tyler Coppin
DIRECTOR	Adam Cook
SET DESIGNER	Genevieve Blanchett
COSTUME DESIGNER	Kym Barrett
LIGHTING	Nigel Levings

12 OCTOBER - 3 NOVEMBER THE SPACE

PHOTO: SAM BORICH



7 the real thing

By Tom Stoppard

A modern classic, *The Real Thing* is a thinly disguised self-portrait of a writer who, through his life and work, struggles to make sense of that most elusive of human emotions, love.

Henry is a successful playwright whose marriage is on shaky ground. He's married to Charlotte, an actress who is playing the lead in his current play, *House of Cards*. Henry has fallen in love with another actress, Annie - but is this new love 'the real thing'?

Underlying this dissection of love and fidelity are related concerns. Does art influence life? Can life imitate art? Must art have a political and social value or can it stand alone, as art for art's sake? But ultimately it is the passionate desire of Stoppard's characters to find and understand love that lies at the centre of this remarkable story.

This hugely entertaining play sparkles with wit, cleverness and acerbic humour. Its cutting and tender insights will follow you out of the theatre and deep into the night.

"Not only Stoppard's most moving play, but also the most bracing play that anyone has written about love and marriage in years." THE NEW YORK TIMES

"Terrific... gutsy and cheerfully intellectual... measurably funny, immeasurably clever and unexpectedly moving." NEW YORK POST

STARRING	Marco Chiappi Rob Macpherson Caroline Mignone
DIRECTOR	Michael Hill
DESIGNER	Dean Hills
LIGHTING	Mark Pennington

16 NOVEMBER - 8 DECEMBER THE DUNSTAN PLAYHOUSE

PHOTO: SHANE REID



LEIGH WARREN & DANCERS, ADELAIDE VOCAL PROJECT AND STATE OPERA OF SOUTH AUSTRALIA,
IN ASSOCIATION WITH STATE THEATRE COMPANY OF SOUTH AUSTRALIA PRESENT

Satyagraha

An opera by Philip Glass

Inspired by the life of Mahatma Gandhi, the opera *Satyagraha* is a mystical, magical and revolutionary journey.

This new production, presented by the prize-winning team that brought Philip Glass' *Akhnaten* and *Einstein on the Beach* to Adelaide, embraces and celebrates the life of a man who was driven by the search for truth through non-violent means - a concept he named *Satyagraha*.

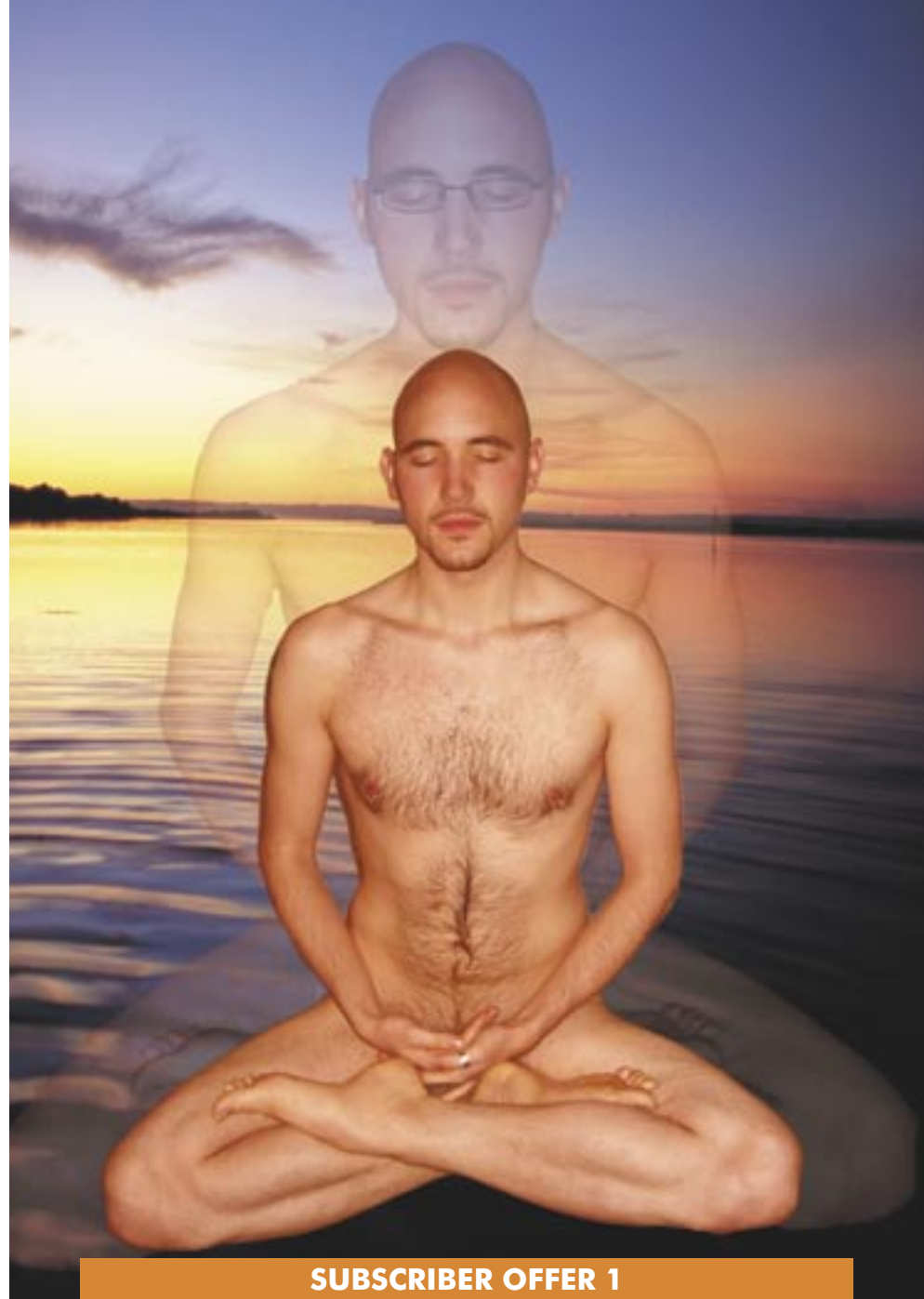
Sung in Sanskrit with text from the ancient Bhagavad-Gita episode of The Mahabharata, *Satyagraha*'s powerful and dramatic musical climaxes, coupled with its sensuous lyricism, make this opera a jewel in Philip Glass's output.

Gandhi's effect on the world around him was profound. Einstein said of him: "Generations to come will scarce believe that such a one as this walked the earth in flesh and blood."

PERFORMED BY	Leigh Warren + Dancers and Adelaide Vocal Project
DIRECTOR/CHOREOGRAPHER	Leigh Warren
MUSIC DIRECTOR/ CONDUCTOR	Timothy Sexton
SET + COSTUME DESIGNER	Mary Moore
LIGHTING DESIGNER	Geoff Cobham

20 - 24 FEBRUARY THE DUNSTAN PLAYHOUSE

IMAGE: RANDALL CALBERT



SUBSCRIBER OFFER 1

WINDMILL PERFORMING ARTS IN ASSOCIATION WITH ADELAIDE FESTIVAL CENTRE,
UWA PERTH INTERNATIONAL ARTS FESTIVAL AND THE SYDNEY FESTIVAL PRESENTS

A WINDMILL PERFORMING ARTS/COMPANY B CO-PRODUCTION

The Adventures of Snugglepoot and Cuddlepie

**A new musical by John Clarke
and Alan John**

**Adapted from a series of books
by May Gibbs**

and Little Ragged Blossom

May Gibbs' iconic story of the Australian bush featuring assorted nuts, blossoms and native creatures is known and loved by generations of Australians. Two national flagship companies have joined forces to turn this literary classic on its head, creating a major new music theatre work to entertain, challenge and surprise adults and children alike.

Written by one of Australia's most loved and admired political satirists, John Clarke, directed by esteemed theatre and opera director, Neil Armfield with music by celebrated composer, Alan John.

Featuring an outstanding cast including Kris McQuade, Ursula Yovich and Tim Richards.

This magical theatrical event will enchant audiences of all ages.

Suitable for children 6 years and over, plus families



By arrangement with The Northcott Society and The Spastic Centre of New South Wales. Snugglepoot and Cuddlepie has been assisted by the Confederation of Australian International Arts Festivals through the Major Festivals' Initiative and New Work with Festivals initiative of the Australia Council, the Australian government's arts funding and advisory body and the Sydney Festival, Adelaide Festival Centre and UWA Perth International Arts Festival.

DIRECTOR	Neil Armfield
BOOK + LYRICS	John Clarke with Doug MacLeod
MUSIC + ADDITIONAL LYRICS	Alan John
SET DESIGNER	Stephen Curtis
COSTUME DESIGNER	Tess Schofield
LIGHTING DESIGNER	Nigel Leving
SCRIPT EDITOR	Doug MacLeod
SOUND DESIGNER	David Gilfillan
ASSISTANT DIRECTOR	Geordie Brookman

2 - 14 MARCH THE DUNSTAN PLAYHOUSE



SUBSCRIBER OFFER 2

STATE THEATRE COMPANY OF SOUTH AUSTRALIA + STATE OPERA OF SOUTH AUSTRALIA PRESENT

Little Women

An Opera by Mark Adamo

"Some sort of masterpiece..."

THE NEW YORK TIMES

A huge hit in New York and across the United States, this dazzling opera based on Louisa May Alcott's timeless tale about the power of family, friendship and romance is capturing the hearts of a new generation and captivating audiences of all ages.

Conducted by Timothy Sexton and directed by Adam Cook, *Little Women* is the poignant coming-of-age chronicle of the four March sisters - Jo, Beth, Meg and Amy - in 19th-century New England.

Adapted many times for stage and screen, *Little Women* comes to the Dunstan Playhouse in this State Theatre Company of South Australia and State Opera collaboration, featuring a score and libretto by acclaimed young American composer Mark Adamo.

This Australian premiere production features mezzo-sopranos Sally-Anne Russell and Kylie Bailey as Jo and Meg, with tenor James Egglestone as Jo's long-suffering suitor, Laurie. Also featured are sopranos Eleanor Blythman as Amy, Jessica Dean as Beth and mezzo-soprano Sarah Sweeting as Alma March.

"A major miracle of success... poignant and masterfully realized: as musically and dramatically exciting as anything in Verdi." THE WALL STREET JOURNAL

"Stunning in its inventiveness, craft and downright beauty..." PBS



State OPERA
south australia

DIRECTOR	Adam Cook
SET + COSTUME DESIGNER	Dean Hills
CONDUCTOR	Timothy Sexton

19 MAY - 2 JUNE THE DUNSTAN PLAYHOUSE

PHOTO: SHANE REDD



SUBSCRIBER OFFER 3

Miriam Margolyes in *Dickens' Women*

By Miriam Margolyes and Sonia Fraser

"Absolute magic" DAILY TELEGRAPH (UK)

Miriam Margolyes is a brilliant interpreter of Charles Dickens and her wonderful sense of humour shines through as she traces the startling similarities of the women in Dickens' work and in his life.

There is *The Old Curiosity Shop's* Little Nell, based upon his sister-in-law Mary Hogarth, whose death at 17 left him bereft, the loyal Mrs Micawber from *David Copperfield* inspired by his own mother, not to mention the cold, embittered Miss Havisham from *Great Expectations*, possibly Dickens himself at the end of his life.

Miriam Margolyes has enjoyed huge success with *Dickens' Women* around the world and her West End season in the Duke of York Theatre earned her an Olivier nomination.

The acclaimed British actress also won an LA Critics Circle Award for her role as Flora Finching in the film of *Little Dorrit* and she has become a favourite with film-goers for her many other roles, including performances in *The Age of Innocence*, *William Shakespeare's Romeo + Juliet*, *The Life and Death of Peter Sellers* and, of course, as Professor Sprout in *Harry Potter and the Chamber of Secrets*.

"I have been a great admirer of Dickens, a passionate admirer, all my life and I want to share with you my relish in his humour and variety and vitality"

MIRIAM MARGOLYES

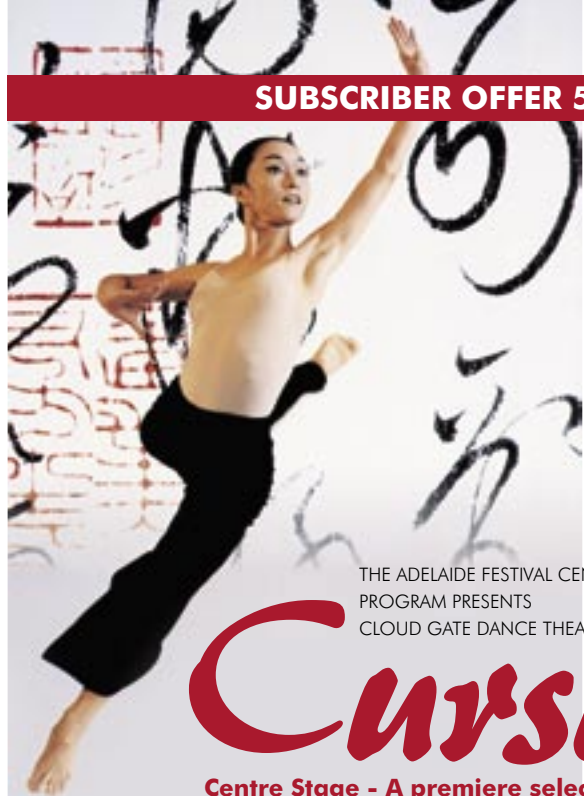
6 - 10 NOVEMBER HER MAJESTY'S THEATRE

PHOTO: COURTESY OF SHANAHAN MANAGEMENT

SUBSCRIBER OFFER 4



SUBSCRIBER OFFER 5



THE ADELAIDE FESTIVAL CENTRE'S PIVOT(AL)
PROGRAM PRESENTS
CLOUD GATE DANCE THEATRE OF TAIWAN'S

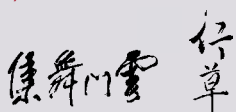
Cursive

**Centre Stage - A premiere selection
of International Performance**

In 2001, Cloud Gate's Artistic Director LIN Hwai-min explored the possibilities of Tai Chi Tao Yin, an ancient form of Chi Kung, and martial arts, and created *Cursive*. He asked Cloud Gate dancers to improvise by facing blown-up images of calligraphy. The dancers absorbed the energy, or Chi, of the writer and imitated the linear "route" of ink, full of lyrical flows and strong punctuations with rich variations in energy. The exercise produced unimaginable movements, from subtle slow motions to martial-arts-like attacks with powerful energy. These eventually became the movement material for *Cursive*, a work of stunning beauty.

This tour is made possible by the Council for Cultural Affairs, Taiwan www.cca.gov.tw

*"Dancing and calligraphy merged here into a single art of motion...
Cursive affirmed the glory of beauty itself."* THE NEW YORK TIMES



13 - 14 FEBRUARY THE FESTIVAL THEATRE

DANCER: CHIU-IWEN PERFORMED BY CLOUD GATE DANCE THEATRE OF TAIWAN PHOTO: LIU CHEN-HSIANG

season 2007 performance guide

subscriber briefings - subscribers can enjoy a complimentary glass of wine with us and meet the director, creative team and actors at exclusive subscriber briefings. Meet in the Dunstan Playhouse foyer at 5.45pm - no bookings required.

previews - are the first full performances with an audience prior to opening night.

opening nights - are reserved for Gold Subscribers (see page 9).

sunset performances - are early evening performances commencing at 6.30pm on Mondays, Tuesdays and Wednesdays (other than previews and openings).

night with state - a sunset performance followed by a discussion with the cast and director.

school shows - special daytime performances for high school students (see page 41 for details).

this uncharted hour

By Finegan Kruckemeyer

9 - 24 February

The Space

Subscriber Briefing

Mon 5 Feb 6.00pm

Previews

Fri 9, Sat 10 + Mon 12 Feb 7.30pm

Open

Tue 13 Feb 7.30pm

Evenings

Thu - Sat 15 - 24 Feb 7.30pm

Sunsets

Mon - Wed, 14 - 21 Feb 6.30pm

Saturday Matinees

10, 17 + 24 Feb 1.30pm

Midweek Matinee

Thu 15 Feb 11.00am

Night with State

Mon 19 Feb 6.30pm

School Show

Wed 21 Feb 10.30am



SPECIAL SUBSCRIBER OFFER

Cursive in association with the
Adelaide Festival Centre

13 - 14 February

The Festival Theatre

*Subscribers can book tickets for \$75/\$65
(normally \$85/\$75)



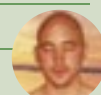
SPECIAL SUBSCRIBER OFFER

Satyagraha in association with
Leigh Warren Dancers

20 - 24 February

The Dunstan Playhouse

*Subscribers can book tickets for \$42/\$36
(normally \$48/\$42)



SPECIAL SUBSCRIBER OFFER

Snugglepot and Cuddlepie
in association with

Windmill Performing Arts

2 - 14 March

The Dunstan Playhouse

*Subscribers can book tickets for \$25/\$22/\$18
(normally \$27/\$23/\$19 children 16 and under)



season 2007 performance guide

Hamlet

By William Shakespeare

30 March - 21 April

The Dunstan Playhouse

Subscriber Briefing

Mon 26 Mar 6.00pm

Previews

Fri 30, Sat 31 Mar + Mon 2 Apr 7.30pm

Open

Tue 3 Apr 7.30pm

Evenings

Thu - Sat, 5 - 21 Apr 7.30pm

No show Good Friday

Sunsets

Mon - Wed, 4 - 18 Apr 6.30pm

No show Easter Monday

Saturday Matinees

14 + 21 Apr 1.30pm

Midweek Matinees

Thu 5 + Wed 18 Apr 11.00am

Special Easter Monday Matinee

Mon 9 Apr 2.00pm

Night with State

Mon 16 Apr 6.30pm

School Shows

Mon 2 + Wed 11 Apr 10.30am



Triple Threat A TRIPLE BILL

6 - 28 July

The Dunstan Playhouse

Subscriber Briefing

Mon 2 Jul 6.00pm

Previews

Fri 6, Sat 7 + Mon 9 Jul 7.30pm

Open

Tue 10 Jul 7.30pm

Evenings

Thu - Sat, 12 - 28 Jul 7.30pm

Sunsets

Mon - Wed, 11 - 25 Jul 6.30pm

Saturday Matinees

21 + 28 Jul 1.30pm

Midweek Matinees

Thu 12 + Wed 18 Jul 11.00am

Night with State

Mon 16 Jul 6.30pm

School Show

Wed 25 Jul 10.30am



SPECIAL SUBSCRIBER OFFER

Little Women in association with
State Opera of South Australia

19 May - 2 June

The Dunstan Playhouse

*Subscribers can book tickets for \$85/\$80
(normally \$95/\$90)



SPECIAL SUBSCRIBER OFFER

Dickens' Women

in association with Andrew McKinnon

6 - 10 November

Her Majesty's Theatre

*Subscribers can book tickets for \$55/\$49
(normally \$65/\$59)



play with strangers

Lion Pig Lion

by Marty Denniss

10 August - 1 September

The Dunstan Playhouse

Subscriber Briefing:

Mon 6 Aug 6.00pm

Previews

Fri 10, Sat 11 + Mon 13 Aug 7.30pm

Open

Tue 14 Aug 7.30pm

Evenings

Thu - Sat, 16 Aug - 1 Sep 7.30pm

Sunsets

Mon - Wed, 15 - 29 Aug 6.30pm

Saturday Matinees

25 Aug + 1 Sep 1.30pm

Midweek Matinees

Wed 22 + 29 Aug 11.00am

Night with State

Mon 20 Aug 6.30pm

School Show

Thu 16 Aug 10.30am



Doubt

by John Patrick Stanley

5 - 22 September

The Dunstan Playhouse

Subscriber Briefing

Tue 4 Sep 6.00pm

Previews

Wed 5 + Thu 6 Sep 7.30pm

Open

Fri 7 Sep 7.30pm

Evenings

Thu - Sat, 8 - 22 Sep 7.30pm

Sunsets

Mon - Wed, 10 - 19 Sep 6.30pm

Saturday Matinees

15 + 22 Sep 1.30pm

Midweek Matinees

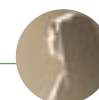
Wed 12 Sep 11.00am

Night with State

Mon 10 Sep 6.30pm

School Shows

N/A -



Lyrebird - Tales of Helpmann

by Tyler Coppin

12 October - 3 November

The Space

Subscriber Briefing

Mon 8 Oct 6.00pm

Previews

Fri 12, Sat 13 + Mon 15 Oct 7.30pm

Open

Tue 16 Oct 7.30pm

Evenings

Thu - Sat, 18 Oct - 3 Nov 7.30pm

Sunsets

Mon - Wed, 17 - 31 Oct 6.30pm

Saturday Matinees

27 Oct + 3 Nov 1.30pm

Midweek Matinees

Thu 18, Wed 24 + 31 Oct 11.00am

Night with State

Mon 22 Oct 6.30pm

School Shows

N/A -



The Real Thing

by Tom Stoppard

16 November - 8 December

The Dunstan Playhouse

Subscriber Briefing

Mon 12 Nov 6.00pm

Previews

Fri 16, Sat 17 + Mon 19 Nov 7.30pm

Open

Tue 20 Nov 7.30pm

Evenings

Thu - Sat, 22 Nov - 8 Dec 7.30pm

Sunsets

Mon - Wed, 21 Nov - 5 Dec 6.30pm

Saturday Matinees

24 Nov, 1 + 8 Dec 1.30pm

Midweek Matinees

Wed 28 Nov + Wed 5 Dec 11.00am

Night with State

Mon 26 Nov 6.30pm

School Shows

N/A -



so are you ready to subscribe?

Now that you've seen what's on offer in 2007, you're ready to subscribe. There are four ways you can do this:

(1) by mail

Post the completed form to the address shown as soon as possible, as subscriptions are processed in order of receipt. You can pay by cheque or money order made out to BASS, or with any major credit card.

(2) by fax

Please fax both sides of your completed booking form, with credit card details, to BASS Subscriptions on (08) 8231 0550.

(3) by phone

Have your credit card details handy and ring BASS subscriptions on (08) 8205 2200. We'll do the rest for you.

(4) in person

Leave your completed form with credit card details at the Adelaide Festival Centre Box Office 9am - 6pm Monday to Saturday and the BASS staff will be pleased to assist you.

current subscribers

Please tick the appropriate box on the booking form if you are a 2006 subscriber. Current subscribers enjoy a preferential booking period of 3 weeks, until 10 November 2006.

new subscribers

Welcome and thank you for coming on board with us in 2007! We urge you to lodge your subscription application immediately as it will be processed in order of receipt. New subscribers have a preferential booking period from 13 - 24 November.

sitting with friends

If you wish to sit with friends who are also subscribing, please ensure that your booking forms are mailed in the same envelope, stapled together with a note requesting that your seats be allocated together.

group subscriptions

These are available for a minimum of 10 people booking for the SAME plays and packages on the SAME nights. Choose from any of the subscription

series and receive one free subscription for every nine purchased. Please note that group subscribers must pay in full when lodging their subscriptions.

pay half now, half later

This is an easy instalment plan for your convenience. Tick the box indicating you wish to use this service and pay half now and the balance on 8 January 2007. Your complete season tickets will be sent out after this date. This service is not available after 15 December 2006.

opening nights/ membership groups

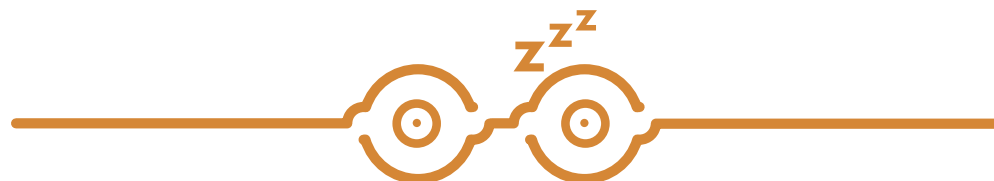
Please call Tess Syme or Kate O'Donoghue on (08) 8231 5151 to discuss your individual requirements.

BASS service fee

Please note that a BASS Service Fee of \$6.60 is payable for each subscription form lodged, ie: if two or more subscribers are subscribing to the same package and same performances, and are paying together (ie: by the same cheque, money order or credit card) only ONE \$6.60 fee will be charged. If paying separately or subscribing to different packages or performances, please use separate forms and pay \$6.60 processing fee per form.

booking enquiries

Please call Gerry at BASS on (08) 8205 2200.



dream with your eyes open

2007 subscription packages

thursday to saturday evenings	Full Price	Concession**
Full 7 Play Season	\$280	\$255
6 Plays	\$260	\$235
5 Plays	\$225	\$205

previews, sunsets, saturday matinees	Full Price	Concession**
Full 7 Play Season	\$255	\$230
6 Plays	\$235	\$210
5 Plays	\$205	\$185

youth subscriptions #	Any performance
Full 7 Play Season	\$130
6 Plays	\$120
5 Plays	\$100

midweek matinee package	
7 Plays	\$210
6 Plays	\$185
5 Plays	\$165

EXTRA TICKETS FOR SUBSCRIBER GUESTS~

thursday to saturday evenings	Full Price	Concession**
Hamlet	\$51.70	\$47.70
this uncharted hour	\$41.70	\$37.70
Remaining Season 2007 plays	\$46.70	\$42.70
Fringe Benefits +	\$21.70	N/A
Go Card ^	\$13.70	N/A

previews, sunsets, saturday matinees	Full Price	Concession**
Hamlet	\$46.70	\$42.70
this uncharted hour	\$36.70	\$32.70
Remaining Season 2007 plays	\$41.70	\$37.70
Fringe Benefits +	\$21.70	N/A
Go Card ^	\$13.70	N/A

midweek matinees	All performances
Hamlet	\$38.70
this uncharted hour	\$28.70
Remaining Season 2007 plays	\$33.70
Fringe Benefits +	\$21.70
Go Card ^	\$13.70

YOUTH SUBSCRIBER GUESTS	All Performances
Youth Subscriber guests #	\$21.70

5 SPECIAL OFFERS FOR SUBSCRIBERS	Adult	Concession**
Cursive	\$75	\$65
Satyagraha	\$42	\$36
Snugglepoot and Cuddlepie	\$25	\$22
		\$18 Children
Little Women	\$85	\$80
Dickens' Women	\$55	\$49

SEASON 2007 SINGLE TICKET PRICES*

Single tickets will be released for sale through BASS on 27 November 2006

evenings	Full Price	Concession**
Hamlet	\$60	\$55
this uncharted hour	\$50	\$45
Remaining Season 2007 plays	\$55	\$50

previews, sunsets, matinees	Full Price	Concession**
Hamlet	\$55	\$50
this uncharted hour	\$45	\$40
Remaining Season 2007 plays	\$50	\$45

midweek matinees	Full Price	Concession**
Hamlet	\$45	\$40
this uncharted hour	\$35	\$32
Remaining Season 2007 plays	\$40	\$37

youth		
Fringe Benefits +	\$25	N/A
Go Card ^	\$17	N/A

* 2007 Single ticket prices are inclusive of all BASS booking fees.

**Concession prices are available for pensioners, seniors card holders, children under 16, full time students and the unwaged. Please provide a photocopy of the relevant ID, showing your birth date where applicable.

~ These prices for subscriber guests are for tickets purchased at the time of subscription, tickets bought for subscriber guests at a later date will incur a \$3.30 BASS service fee per ticket

Youth Subscriptions are available to anyone 30 and under, for any performance. Please provide a photocopy of your proof of age. Extra tickets are available at these prices only for guests of youth subscribers who are 30 or under. If your guests are over 30, please use other subscriber guest ticket prices as appropriate.

+ Fringe Benefits prices are available to anyone aged 30 and under (photo ID required).

^ Go Card prices are available to all full time secondary students. Please provide a copy of School Student ID.

Please note that all prices are inclusive of GST where applicable.

access for all

We want everyone to be able to enjoy the thrill of live theatre.

state theatre rush

Every Wednesday night and Saturday matinee for all State Theatre Company shows, we hold our special State Theatre Rush. Firstly, the initiative enables anyone to purchase last minute balcony seats in the Dunstan Playhouse or last available seats in the Space for just \$22.50. Secondly, we offer Pay-What-You-Can for the unemployed, where patrons must show their Healthcare Card at the box office for entry by donation. All State Theatre Rush tickets are available at the door one hour prior to performance and are always subject to availability.

disability access

All State Theatre Company venues have excellent access facilities including hearing assistance, audio description for the vision impaired, wheelchair seat allocations, lifts, access car parks and toilets. When booking tickets, it is important that you inform BASS of any access requirements.

vision impaired performances

We hold performances specifically designed to enhance the enjoyment of theatre for patrons with vision impairment. A special Vision Impaired Night is held for each production in our subscription season. On this night patrons are invited to attend a pre-show briefing on the set with the cast, and then an

audio-description of the performance is available during the show. The audio-description is also available for the Saturday matinee following the Vision Impaired Night.

To book for these performances phone (08) 8205 2220. Patrons meet in the Dunstan Playhouse foyer at 5.30pm for the pre-show briefing on the Vision Impaired Nights. The performance then commences at the normal Sunset time of 6.30pm.

Vision impaired nights for 2007 are:

this uncharted hour

Tue 20 Feb	6.30pm
The Space	

Hamlet

Tue 10 Apr	6.30pm
The Dunstan Playhouse	

Triple Threat

Tue 17 Jul	6.30pm
The Dunstan Playhouse	

Lion Pig Lion

Tue 21 Aug	6.30pm
The Dunstan Playhouse	

Doubt

Tue 11 Sep	6.30pm
The Dunstan Playhouse	

Lyrebird

Tue 23 Oct	6.30pm
The Space	

The Real Thing

Tue 27 Nov	6.30pm
The Dunstan Playhouse	

education

education program

The Education Program guide will be mailed to Drama and English high school teachers in late 2006. Phone (08) 8231 5151 if you would like a copy.

school shows

State Theatre Company presents daytime performances specifically for high school students. Each play is followed by a post-show chat with the cast. Teachers are provided with detailed Teachers' Notes before the performance. Tickets are \$17 per student (or \$15 for schools listed on the Disadvantaged Schools' list). Performance dates are listed on pages 33 - 35 and bookings can be made through BASS Special Events on (08) 8205 2220.

state theatre company young guns 8 playwrights' competition

The under 19 playwrights' competition is designed to encourage and assist the development of young playwrights. Prize winners will receive a cash prize and workshopping of their script with a professional director, dramaturge and cast. The winning plays will be

performed as staged readings. South Australian entrants are encouraged to enter a one-act play under 30 minutes in length.

workshops

State Theatre Company will be offering a variety of workshops for both teachers and secondary students which will cover a broad range of topics based on selected plays from the 2007 season.

work experience

22 - 25 May 2007 (Week 4, Term 2)

In 2007 State Theatre Company of South Australia will again be conducting a group work experience program to give secondary students the chance to get an in-depth look into the activities and processes of a professional theatre company. The program gives students the opportunity to explore various departments that combine together as a team to produce theatre, from workshop, to wardrobe and administration.

Details of the Education Program will be available on the State Theatre Company website from late 2006



brain food

ticket information

refunds + exchanges

All State Theatre Company tickets are non-refundable. Single tickets cannot be exchanged.

lost tickets

If you lose tickets, please contact Gerry at the BASS Subscriptions department on (08) 8205 2200 (if you are a subscriber) or 131 246 (for single ticket buyers) immediately and they will organise replacements. Re-issued tickets are non-exchangeable for another performance date and cannot be re-issued after the performance date.



believe the hype!

visiting state theatre

the dunstan playhouse and the space

Both theatres are part of the Adelaide Festival Centre complex. The Centre can be accessed via Festival Drive from King William Road, or Station Road off North Terrace.

subscriber ticket exchange

BASS provides one free ticket exchange per subscription per year and charges an exchange fee of \$3.30 per ticket for each subsequent exchange. You will have to pay any difference in price if upgrading to a more expensive performance. We regret that we cannot refund any difference if you exchange to a cheaper price category. Please send your tickets to BASS Subscriptions, GPO Box 1269 Adelaide 5001 or take your exchange request to the BASS Counter in the Adelaide Festival Centre for immediate processing. Please allow 5 working days prior to the performance. Tickets cannot be exchanged after the performance date. Subscription tickets cannot be refunded.

car parks

Pre-book your parking space when you book your tickets. Entry to the Adelaide Festival Centre car park is via King William Road.

Encore! Encore!



When it comes to fruit and vegies,
always go for more.



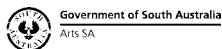
www.gofor2and5.com.au



thank you

state theatre company of south australia
thanks the following for their support

government support



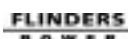
we're smoke free



creative partners



major partners



membership groups

Dramatic Women



*doctors
in Theatre*

corporate partners

Business SA
Council for International
Trade and Commerce SA Inc
Flotek
KAZ
Media Monitors
Norman Waterhouse
Prescott Securities Ltd
SA Great
Tynte Flowers
uberart.com.au

coup de theatre

corporate training + development



For information on corporate partnerships
or training call Irene Jones on (08) 8231 5151.

booking form
separate pdf

booking form

separate file

PLEASE INSERT WHEN

PAGINATING

spread 250 x200mm

booking form

separate file

PLEASE INSERT WHEN

PAGINATING

spread 250 x200mm

booking form
 separate file
 PLEASE INSERT WHEN
 PAGINATING
 spread 250 x200mm

board of governors

CHAIR	Brenton Wright
GOVERNORS	Nicola Downer AM Celine McInerney Peter Siebels Peter Vaughan
SUBSCRIBER ELECTED GOVERNORS	Richard Flynn Rachel Spencer
EMPLOYEE ELECTED GOVERNOR	Jen Smith

the company

CHIEF EXECUTIVE	
ARTISTIC DIRECTOR	
FINANCE DIRECTOR	
PRODUCTION DIRECTOR	
MARKETING DIRECTOR	
ARTISTIC ASSOCIATE	
PUBLICISATIONS	
MARKETING DEVELOPMENT	
ADMINISTRATIVE	
ADMINISTRATIVE	
PRODUCTION	
WORKSHOP SUPERVISOR	John Meyer
LEADING HAND	Areste Nicola
CARPENTERS + PROP MAKERS	Patrick Duggin Lee Shiers
SCENIC ART SUPERVISOR	Sandra Anderson
PROP SHOP	Robin Balogh
WARDROBE SUPERVISOR	Cate Breasley
WOMEN'S CUTTER/COSTUME MAKER	Sue Nicola
MEN'S CUTTER/COSTUME MAKER	Jen Smith
COSTUME MAKERS	Jennifer Trotta
HAIR, MAKE-UP + WIGS	Jana DeBiasi
COSTUME HIRE	Tania Prosdocimo
DEVELOPMENT CONSULTANT	Irene Jones
UK REPRESENTATIVES	Yolande Bird Diana Franklin
NY REPRESENTATIVE	Jo Porter

All details in this brochure are correct at the time of printing but are subject to change in the event of unavoidable circumstances. All sales are final and refunds are only issued under special circumstances.

state theatre company of south australia
 Adelaide Railway Station, Station Road, Adelaide, South Australia 5000
 PO Box 8252 Station Arcade T. 61 8 8231 5151 F 61 8 8231 6310
 info@statetheatrecompany.com.au www.statetheatrecompany.com.au

GONE TO PRESS

get mine
subscribe!



state theatre
company
OF SOUTH AUSTRALIA