

20

STATE THEATRE
COMPANY SOUTH AUSTRALIA

20

Ngadlu tampinhi Kurna
miyurna yaiya yarta-mathanya
Wama Tarntanyaku.

Parnaku yailtya, parnaku tapa
purruna, parnaku yarta ngadlu
tampinhi. Yalaka Kurna Miyurna
itu yailtya, tapa purruna, yarta kuma
puru martinhi, puru warri-apinhi,
puru tangka martulayinhi. Ngadlu
tampinhi purkarna pukinangku,
yalaka, tarrkarritya.

We acknowledge the Kurna
people as the traditional custodians
of the Adelaide Plains.

We recognise and respect their
cultural heritage, beliefs and
relationship with the land.

We acknowledge that they are
of continuing importance to the
Kurna people living today and
pay respects to Elders past,
present and future.



As a cornerstone of our cultural landscape, State Theatre Company South Australia continues to produce high-quality, locally created, and nationally recognised theatre and the 2025 season is no exception.

The Malinauskas Government is excited to celebrate this season, which will also mark the final season for beloved Artistic Director Mitchell Butel. We congratulate Mitchell on his tenure and thank him for the enthusiasm and success he has brought to the Company and South Australia.

Our State Theatre Company is going from strength to strength, producing some of the largest audiences and highest-selling productions that the Company has ever seen. We are proud to support the Company's continued work, especially in touring productions nationally, as well as bringing some of Australia's greatest stars to our State. We are committed to supporting the Company as part of a vibrant, year-long arts and cultural program for all South Australians.

The 2025 season promises a rich variety of theatre, showcasing different styles and scales, including a unique opportunity for up-and-coming South Australian playwrights to hear their work on stage.

I encourage everyone to experience the extraordinary theatre on offer and commend the entire team at State Theatre Company South Australia for once again putting together an outstanding program.

The Hon Andrea Michaels MP
Minister for Arts
Minister for Small and Family Business
Minister for Consumer and Business Affairs



I am honoured to introduce State Theatre Company South Australia's 2025 season.

This will be the final season that Artistic Director Mitchell Butel presents, after six extraordinary years with the Company. I would like to extend my heartfelt thanks to Mitchell who brought a strong and successful artistic vision to the Company with original theatre productions, bold new talent and care for the industry, artists and collaborators. We will miss him, but we are delighted for this next chapter in his career and wish him well.

I would like to acknowledge and thank the South Australian Government, through Arts SA, and the Australian Government, through Creative Australia, for their continued support. Our sincere thanks go as well to our generous community of donors and corporate partners—your belief in and investment in the Company are invaluable.

I would also like to commend the hardworking staff for their extraordinary effort in bringing this season to life. I am deeply grateful to everyone for their unwavering commitment to creating, presenting, and promoting exceptional theatre.

Whether you're a subscriber, single-ticket buyer, artist, theatre professional, teacher, student, or simply a lover of the arts, we deeply appreciate your involvement and care for the Company. State Theatre Company South Australia is fortunate to have the ongoing strong support of a vibrant community and audience and we thank you.

Please join us in 2025 and see what we have to offer. See you in the theatre!

Joe Thorp
Board Chair

WELCOME TO 2025



Artistic Director Mitchell Butel

Welcome to State Theatre Company South Australia's 2025 season.

It's a season that's full of works about making a change and making a difference. It's also the last season I've had the pleasure and privilege of curating as Artistic Director of this glorious Company. I have loved my time with this Company and community over the past six years and I hope the shows we've been able to create and share in that time have changed you and left their mark.

In 2025, you'll see on our stages strong and witty women making a change in Canberra's corridors of power in Emily Steel's dazzling world premiere black comedy *Housework*, starring the comic genius mischief makers, Susie Youssef and Emily Taheny; their forebears fighting for equal rights and power over language in a return season of the sold-out hit *The Dictionary of Lost Words*; a young Italian-Australian transforming into the hero she's destined to be in the acclaimed stage adaptation of beloved book and film *Looking for Alibrandi*; an idiosyncratic ice-skating teen being changed by love of another and of herself in the Tony Award-winning smash hit musical comedy *Kimberly Akimbo*, starring stage icons Marina Prior and Casey Donovan; the ways in which First Nation Australian fathers have nurtured their sons and our country's culture in Thomas Mayo and co's *Dear Son* featuring Trevor Jamieson and Jimi Bani; and a family navigating change and hope in one of the greatest plays of all time, *The Glass Menagerie*, starring two of the finest South Australian actresses, Ksenja Logos and Kathryn Adams.

And the icing on the cake will be a showcase of South Australian writers whose exciting new plays will help change the way we see the world and ourselves.

So many great ideas, so many great artists, so many great productions all awaiting you.

Collaboration is at the heart of making great theatre and 2025 continues our commitment to work with the nation's most inspiring and talented creators and companies including Sydney Theatre Company, Melbourne Theatre Company, Queensland Theatre and Brink Productions.

At the end of *Kimberly Akimbo*, which I am delighted to be returning to the Company to direct next year, the characters sing:

*We'll miss this great adventure
You never know and nor do I
When we will have to say goodbye
So just enjoy the time*

I will miss this great adventure that I have had with all of you, but the support, passion and positivity of all the Company's staff (particularly our brilliant Executive Director and my dear friend, Julian Hobba), Board (chaired by the wise and wonderful Joe Thorp), funders, stakeholders and audiences have made this the most enjoyable ride of my life and I am and will be forever grateful.

It has been an honour to be a custodian of this Company that has had such a huge and lasting impact on the state and nation's cultural life, and I can't wait to watch the next generation of bold and brilliant artists burst into State Theatre Company South Australia to thrill you with more phenomenal theatre.

Meanwhile, enjoy the rollercoaster ride of high-wire and high-quality work we have in store for you in 2025. It's going to be quite the trip.

With great love and thanks,



MITCHELL BUTEL
ARTISTIC DIRECTOR



**SUBSCRIBE
TODAY!**



**PRE-BOOK A PACKAGE OF
4-6 PLAYS AND ENJOY:**



★ **MASSIVE SAVINGS**

★ **BEST SEATS IN THE HOUSE**

★ **EXCLUSIVE EVENTS & SPECIAL OFFERS**



HOUSEWORK

BY EMILY STEEL

DIRECTOR

Shannon Rush

DESIGNER

Ailsa Paterson

LIGHTING DESIGNER

Nigel Levings

STARRING

Emily Taheny

Susie Youssef

CREATIVE PARTNER



PRESENTING PARTNER

waterⁿish

SUPPORTED BY

**DRAMATIC
WOMEN**

CONTENT

Coarse language,
adult themes, and
sexual references.

**How'd I get so wise? I watched my dreams die.
And then I kept going.**

Kelly Sheppard, a naive but excited junior staffer in the Electorate Office of Ruth Mandour, Minister for Health, unexpectedly gets the chance to travel to Canberra with the passionate MP she idolises and Ruth's brilliant-but-exhausted Chief of Staff, Anna Cooper. Anna's juggling Ruth's new policy launch, a husband who can't deal with their kid in her absence and the type of muffins the Minister requires for a cabinet meeting while Kelly's over the moon to get behind the scenes at Parliament and to watch her hero in action. But getting what you want in the nation's capital requires some fancy footwork. What they all experience in that week makes them question their ambitions, their ideals and the value of democracy itself.

A whip smart, gaspingly funny and incisive deep dive into the corridors of power with shades of *Veep*, *The Thick of It* and *The Hollowmen*, celebrated South Australian playwright Emily Steel (*Euphoria*) blows open the doors of Parliament House to unlock some devilish and dangerous truths in this bold new black comedy.

Two of Australia's greatest comic actresses take to the stage in this thrilling world premiere - acclaimed actress and comedian Susie Youssef, star of *The Project*, *Deadloch* and *The Appleton Ladies Potato Race* assumes the ministerial mantle while Emily Taheny, she of a thousand characters from Shaun Micallef's *Mad As Hell*, is set to juggle a plethora of political hot potatoes as Anna, with direction from State Theatre Company South Australia Artistic Associate Shannon Rush (*Cathedral*, *The Puzzle*).

Sex scandals, betrayals, culture wars, the price of power, motherhood and Machiavellian manipulation - it's all in a day's work inside the House.

"Steel's writing is precise, economic, wry, painfully accurate and guffawingly funny" - Glam Adelaide

"Steel's writing is superb" - InDaily

Supported by a residency at Assemblage Centre for Creative Arts at Flinders University.

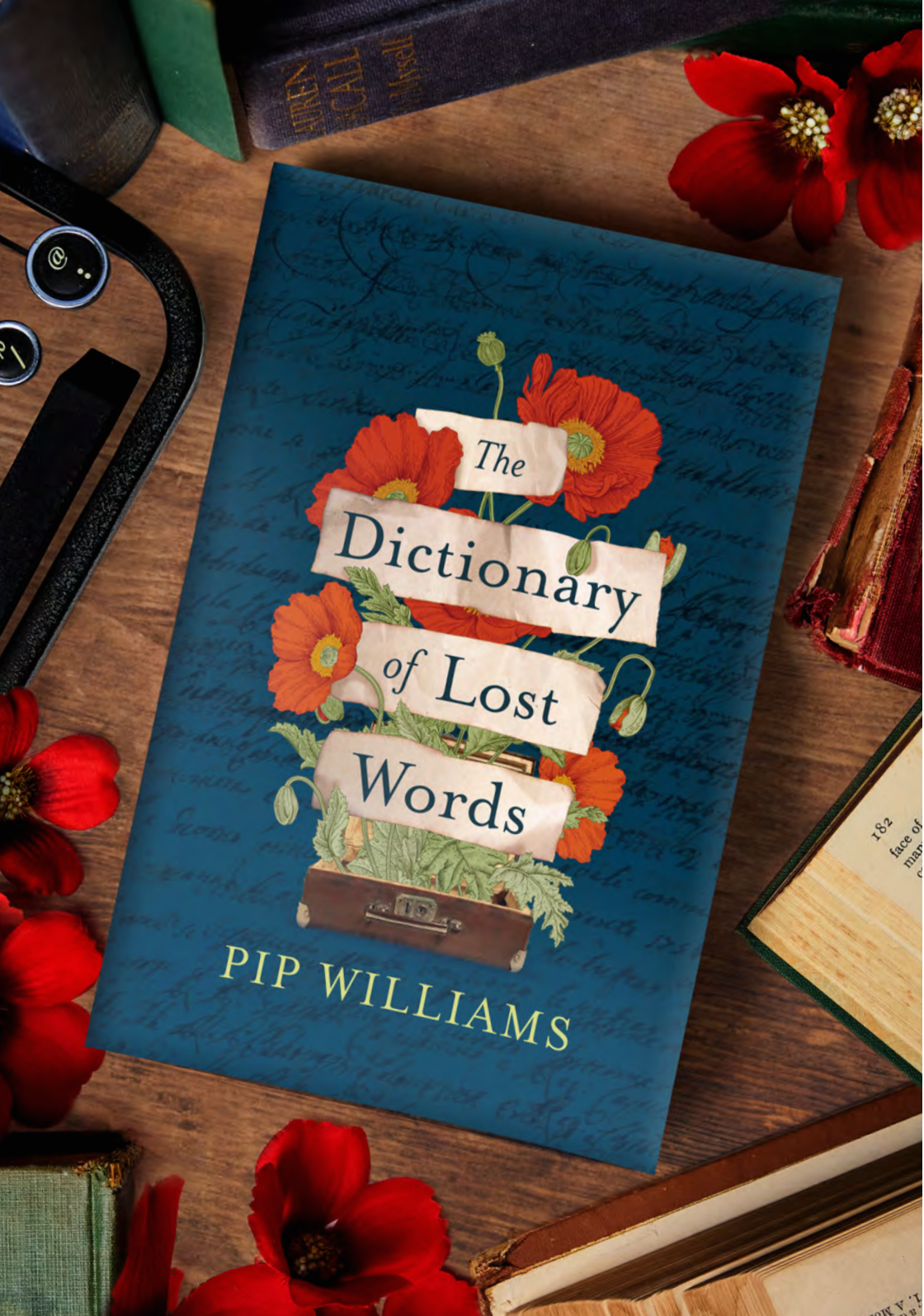
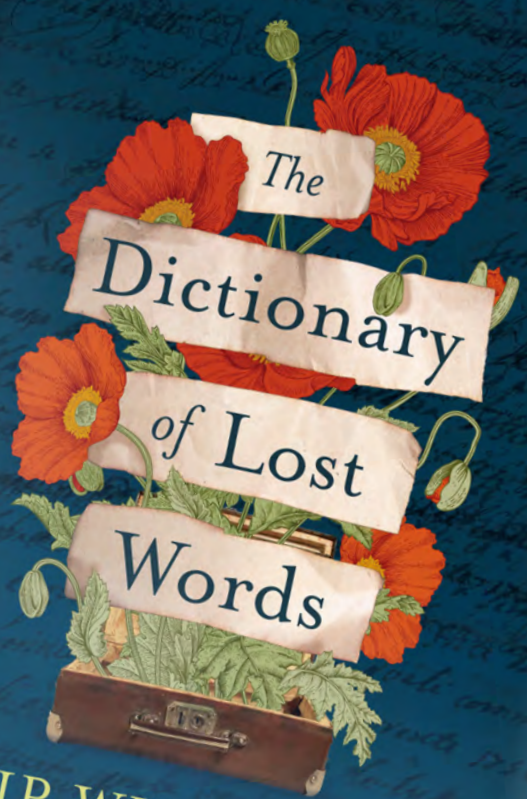
A MESSAGE FROM MITCHELL

Emily Steel is a rock star. Our co-production with Country Arts SA of Euphoria was a huge hit - deeply funny, inventive and moving - and toured the country to great acclaim. Her new play is a firecracker, displaying her trademark laser wit, huge heart and intelligent and captivating narrative. Add a cast of Australia's finest comic actors led by Susie Youssef and Emily Taheny, you are in for a treat.

7 - 22 FEB
DUNSTAN PLAYHOUSE

PIP WILLIAMS

The
Dictionary
of Lost
Words



THE DICTIONARY OF LOST WORDS

ADAPTED BY VERITY LAUGHTON

FROM THE NOVEL BY PIP WILLIAMS

DIRECTOR

Jessica Arthur

SET DESIGNER

Jonathon Oxlade

COSTUME DESIGNER

Ailsa Paterson

LIGHTING DESIGNER

Trent Suidgeest

COMPOSER & SOUND DESIGNER

Max Lyandvert

ASSISTANT DIRECTOR

Shannon Rush

STARRING

Arkia Ashraf

Rachel Burke

Ksenja Logos

Angela Nica Sullen

Shannen Alyce Quan

CO-PRODUCER

SYDNEY
THEATRE
CO

PRESENTING PARTNER

novatech
creative event technology

CONTENT

Strong language, mature themes, theatrical smoke and haze and theatrical blood.

Love. Eternal.

After delighting audiences and critics alike in sold out seasons in Adelaide, Sydney and Melbourne, our highest and fastest selling show in the history of the Dunstan Playhouse returns to Adelaide as part of a wider national tour throughout 2025.

Lovingly adapted by South Australian playwright Verity Laughton from Pip Williams' acclaimed bestseller, *The Dictionary of Lost Words* is back.

In 1901, the word *bondmaid* was discovered missing from the Oxford English Dictionary. *The Dictionary of Lost Words* is the story of the girl who found it.

A multi-award winner, the book has been praised by critics as an “*absorbing, quietly revolutionary novel*” (*The Age*) and “*a captivating and slyly subversive fictional paean to the real women whose work on the Oxford English Dictionary went largely unheralded*” (*The New York Times*).

Motherless and ever curious, Esme spends her childhood in the Scriptorium – the “Scrippy”, a garden shed in Oxford where her father and a team of lexicographers are gathering words for the very first Oxford English Dictionary. She hides beneath the table and catches discarded words as they fall – words the men find irrelevant and unimportant... female words. Here begins Esme's collection of her own dictionary: the Dictionary of Lost Words.

As the years pass and Esme's world expands and her circle of friends grows – actresses, suffragettes, market traders, workers, she realises the power in gathering their voices, and lending hers. And on the way, she comes to understand the many meanings of the word “love”.

★★★★★ “*The piece is a real work of art, with each detail carefully considered and placed to bring Williams' novel to life.*” - *Glam Adelaide*

“*The Dictionary of Lost Words is a must-see. In a first for State Theatre, the entire season sold out before opening, with every effort being made to find some extra seats. If you can get one, do it. It's unmissable.*” - *The Advertiser*

A MESSAGE FROM MITCHELL

The avalanche of 5-star reviews and full houses for the initial seasons of this incredible South Australian-born story says it all. Don't miss out this time. How many words are there in the dictionary similar to ones like pride and love and gratitude – feelings we all have for this masterpiece?

3 - 17 APRIL
DUNSTAN PLAYHOUSE



LOOKING FOR ALIBRANDI

BY VIDYA RAJAN

BASED ON THE BOOK BY MELINA MARCHETTA

DIRECTOR

Stephen Nicolazzo

SET AND COSTUME DESIGNER

Kate Davis

LIGHTING DESIGNER

Katie Sfetkidis

COMPOSER AND SOUND DESIGNER

Daniel Nixon

STARRING

Chris Asimos

Chanella Macri

Ashton Malcolm

Lucia Mastrantone

Jennifer Vuletic

Riley Warner

An iconic Australian coming-of-age novel takes centre stage.

It's the last year of school and 17-year-old Josephine Alibrandi can't wait for her future to begin – if only she can get past the world of her Nonna, holding onto the values of the old country and the world of her Mum, full of care and secrets. It's time to take her place in the real world, beyond her family, beyond being an Alibrandi.

But this is the year Josie gets to know her father. This is the year she falls in love. And this is the year she uncovers the truth – and finds the Alibrandi she has been searching for.

Three generations of women. The Italian-Australian experience. A trip back into the 1990s. A theatrical adaptation of the beloved iconic Australian novel and groundbreaking film, fresh from sold out seasons in Sydney and Melbourne will have its Adelaide premiere in 2025. Directed by the new Artistic Director of Brink Productions, Stephen Nicolazzo, there's a new Josie coming this way!

"Broad, bold, playful comedy" - The Age

"This comically and beautifully honest look at cultural identity, class and trauma is brought to vivid life... in this ridiculously enjoyable sunbeam of a production." - Arts Hub

"Rajan's play probes deeply into the generational triptych at the centre: three women, three lives, one heartbeat" - The Guardian

CREATIVE PARTNER

BRINK

CONTENT

Coarse language,
violence, suicide,
sexual references,
smoke and haze effects.

Looking for Alibrandi was commissioned and first produced by Malthouse Theatre and Belvoir in 2022.

A MESSAGE FROM MITCHELL

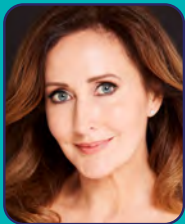
How wonderful that we can present Stephen's hit production of this iconic story as his first show as Artistic Director for Brink. It's equally wonderful to welcome back Adelaide's own Lucia Mastrantone back to the Company. This show will be a joy.

22 - 31 MAY
DUNSTAN PLAYHOUSE

A graphic featuring a vibrant rainbow with a blue border, surrounded by a semi-circle of yellow stars with blue outlines. The title 'Kimberly Akimbo' is written in a large, bold, white font with a blue drop shadow, and 'a musical' is written in a smaller, bold, blue font below it.

Kimberly Akimbo

a musical



**Marina
Prior**



**Casey
Donovan**



**Alana
Iannace**



**Nathan
O'Keefe**



**Christie
Whelan Browne**



Winner of

FIVE TONY AWARDS

including Best Musical



Winner of

BEST MUSICAL

**in the NY Drama Critics' Circle Awards, Drama Desk Awards,
Outer Critics Circle Awards and Lucille Lortel Awards.**



CRITIC'S PICK

THE NEW YORK TIMES



**"THE BEST MUSICAL
OF THE YEAR - BY FAR"**

THE WALL STREET JOURNAL



KIMBERLY AKIMBO

A MUSICAL

BOOK AND LYRICS BY **DAVID LINDSAY-ABAIRE** MUSIC BY **JEANINE TESORI**

BASED ON THE PLAY BY **DAVID LINDSAY-ABAIRE**

LICENSED EXCLUSIVELY BY MUSIC THEATRE INTERNATIONAL (AUSTRALASIA)

DIRECTOR

Mitchell Butel

MUSICAL DIRECTOR

Kym Purling

CHOREOGRAPHER

Amy Campbell

COSTUME DESIGNER

Ailsa Paterson

SET DESIGNER

Jonathon Oxlade

STARRING

Casey Donovan
Alana Iannace
Nathan O'Keefe
Marina Prior
Christie Whelan Browne

CO-PRODUCER

MELBOURNE
THEATRE COMPANY

PRESENTING PARTNER



SUPPORTED BY

MAJOR
PRODUCTION
FUND



WAGNAN
PRODUCTIONS
SARAH ROHRSHHEIM

CONTENT

Coarse language,
and adult themes.

8 – 19 JULY

HER MAJESTY'S THEATRE

The Australian premiere of a Tony Award-winning new musical and a great adventure.

The new girl in town is making heads spin. You've got to move fast when you're 16 going on 70.

Kimberly Akimbo is the musical that took Broadway by storm. It won countless hearts and raked in five Tony awards including Best Musical, with music by Jeanine Tesori (*Shrek*) and book by David Lindsay-Abaire (*Ripcord*).

This Australian premiere directed by four-time Helpmann Award-winner and outgoing Artistic Director, Mitchell Butel and starring Australian stage icons Marina Prior, Casey Donovan, Nathan O'Keefe and Christie Whelan Browne, brims with infectious energy and tunes that soar. This new musical transcends generations with laughter, love and a poignant reminder of life's fleeting moments.

New Jersey, 1999: from a sea of teen angst, unrequited crushes and popularity contests bursts Kimberly, a musical heroine like no other. Equal parts teen comedy, heist caper and unlikely love story, her rollercoaster journey shows that the tempo of your own song is yours to set.

Born with a genetic rarity that means she ages at four times the rate of everyone else, Kimberly is a teen in mid-life form and living on borrowed time. She can cope with her dropkick dad and narcissistic mum – can't spell 'dysfunction' without 'fun', right? But when her criminal aunt Debra shows up with a get-rich-quick scheme too good to be legal, Kimberly decides you're only young once.

"Unabashedly heartfelt and irresistibly funny... and impossible not to love" - Variety

"A howlingly funny heartbreaker of a show, hopscotching among emotions with virtuosic fluidity" - New Yorker

A MESSAGE FROM MITCHELL

It's a spooky but wonderful coincidence that first and last shows I will have directed as AD of the Company are penned by the great American playwright, David Lindsay-Abaire. Like Ripcord, Kimberly Akimbo is both hilarious and heart-warming, tough and tender. With rapturous tunes by Broadway legend Jeanine Tesori and a dreamily starry cast, I cannot wait to skate into this madcap and moving musical.



Pictured: Waangenga Blanco, Opus Blanco. Photography: Sam Scoufos

DEAR SON

LETTERS AND REFLECTIONS FROM FIRST NATIONS FATHERS AND SONS

BASED ON THE BOOK BY THOMAS MAYO

ADAPTED BY ISAAC DRANDIC AND JOHN HARVEY

DIRECTOR

Isaac Drandic

STARRING

Jimi Bani

Trevor Jamieson

CO-PRODUCER

QUEENSLAND
THEATRE

PRESENTING PARTNER



CONTENT

Discussion of racism, trauma, deceased persons, coarse language, and adult themes.

A message of love, hope and healing.

Along with his own vivid and poignant prose and poetry, author and editor Thomas Mayo, co-author of *The Voice to Parliament Handbook* and Kaurareg, Kalkalgal and Erubamle Torres Strait Islander man, invited 12 contributors to write a letter to their son, father or nephew, bringing together a range of perspectives that offered a celebration of First Nations manhood.

Featuring letters from Stan Grant, Troy Cassar-Daley, John Liddle, Charlie King, Joe Williams, Yessie Mosby, Joel Bayliss, Daniel James, Jack Latimore, Daniel Morrison, Tim Sculthorpe and Blak Douglas, what resulted was a gentle, honest and loving book for families from anywhere in the world.

In 2025, renowned First Nations theatre makers, Isaac Drandic (*At What Cost?*) and John Harvey (*Heart is a Wasteland*) will adapt these letters into a world premiere theatre work, and starring leading First Nations actors including Jimi Bani and Trevor Jamieson, that will open your eyes and your heart.

Through story, through music, *Dear Son* will be a groundbreaking theatrical event that will honour the rich traditions and wisdoms of fathers passed down through generations, while also exploring the challenges faced by First Nations men today and the importance of family, the power of culture and the enduring strength of the human spirit.

As Thomas writes to his father: “We were the first builders, craftsmen, storytellers, artists, fishermen, hunters, scientists, inventors, explorers, farmers, engineers, warriors, and healers... We are still all these things and so much more. We are a continuum of proud Aboriginal and Torres Strait Islander men – the fathers of the longest surviving culture on earth. And now, Dad, as your hard exterior becomes brittle with age, I feel you. As dusk reaches your eyes – eyes that were too bright to look upon in my youth – I see you. I understand you, Dad. I love you. I will always be your dear son.”

“Being open, talking up, yarning... This book is about dispelling the stereotype around what masculinity is for First Nations men”
- Tara June Winch, author

A MESSAGE FROM MITCHELL

It is an honour to be co-producing this adaptation of Thomas and co's touching book. A developer of and signatory to the Uluru Statement from the Heart and a leading campaigner for its proposals for a Voice to Parliament, his leadership and advocacy, and that of his fellow writers, are an inspiration to us all.

26 JULY - 16 AUG
ODEON THEATRE



THE GLASS MENAGERIE

BY TENNESSEE WILLIAMS

DIRECTOR

Shannon Rush

SET & COSTUME DESIGNER

Mark Thompson

LIGHTING DESIGNER

Gavin Norris

STARRING

Kathryn Adams
Ksenja Logos

PRESENTING PARTNER

Adina

CONTENT

Adult themes.

Glass breaks so easily. No matter how careful you are.

In a small apartment in 1930s St Louis, Amanda Wingfield and her two children, Tom and Laura, spin singular and separate dreams.

Tom is torn between his obligation to his family and his desire to break away from the suffocating embrace of his mother and his shy and frail sister, whose memory he will never escape. Abandoned by her husband, Amanda comforts herself with recollections of her earlier, more gracious life in the American Deep South, when she was pursued by 'gentlemen callers'.

Now she fights to provide a better life for her grown children, while they struggle for a future that seems unlikely ever to fulfil their mother's hopes and dreams. But a change in fortune suddenly seems possible when a handsome and mysterious young visitor arrives without warning. *The Glass Menagerie*, Tennessee Williams' semi-autobiographical evocation of loneliness and lost love, is one of his most powerful and moving plays; an unforgettable American classic.

Under the direction of Artistic Associate Shannon Rush, this production will feature some of Adelaide's finest performers including the incomparable Ksenja Logos (fresh from her acclaimed turns in *The Dictionary of Lost Words* and *Gaslight*) as Amanda and Kathryn Adams (the scene-stealing star of *Antigone*, *Single Asian Female* and *Welcome to Your New Life*) as Laura.

Don't miss this compelling journey into the heart of memory, illusion and a family fighting for their lives in the intimacy of the Odeon Theatre, to round out our 2025 season.

"One of Tennessee Williams' most powerful and haunting plays" - Australian Arts Review

"Such a strong piece of work, notable for its juxtaposition of social realism, lyric fantasy and Brechtian dialectic"
- Los Angeles Times

"Bracingly theatrical!" - The New York Times

The Glass Menagerie is presented by special arrangement with The University of the South, Sewanee, Tennessee.

A MESSAGE FROM MITCHELL

One of the greatest joys of my tenure has been witnessing the brilliance of South Australia's acting and directing talent. Ksenja, Kathryn and Shannon are prime examples of that. I've delighted in the magic they've all made on our stages and know this theatrical masterwork from Williams will once again platform their unique passion and power.

15 NOV - 7 DEC
ODEON THEATRE



STATE THEATRE COMPANY SOUTH AUSTRALIA PRESENTS

GREAT AUSTRALIAN BITES

BY PIRI EDDY, ANTHONY NOCERA, SARAH PETERS, ALEX VICKERY-HOWE,
NICOLA WATSON, ALEXIS WEST

DIRECTOR

Yasmin Gurreebloo
Nescha Jelk
Anthony Nicola

PRESENTING PARTNER



Adelaide
Health
Simulation

SUPPORTED BY

COMMISSIONING
COLLECTIVE

CONTENT

Frequent coarse
language and
adult themes.

A festival of new South Australian plays.

Across November and December, come and take a bite of some tasty new offerings from the cream of South Australian playwrights. *Great Australian Bites* is a festival of never-performed-before works from some of our most dynamic, innovative and talented theatre makers. These new plays will be rehearsed over several days by similarly talented South Australian actors and directors and read script-in-hand on the Odeon Theatre stage, so expect some fast and fresh fabulosity!

For next-to-nothing ticket prices, get a slice of one or all of these treats:

TRIGGERED *by Alex Vickery-Howe*

An idealistic journalist is forced to confront his politics, his morals and his tribe when his savage takedown of a stand-up comedian leads to an onstage shooting. A bold, brave and black comedy about the cancel culture age.

SPARE A THOUGHT FOR JANA WENDT *by Nicola Watson*

Three old friends reunite for a weekend away at an Airbnb, only to discover that they are not the only people occupying the house. A biting black comedy that will test the oscillations of your moral compass.

CULTURE SLAP *by Alexis West*

A theatricalized adventure following a Black woman stomping, tripping, and fumbling her way through the often treacherous, healing process of protocol. You get it wrong culturally - you're gonna get a *Culture Slap!*

LOST SOCKS AND POLKA DOTS *by Sarah Peters*

Based on interviews with people living and working in residential aged care and their families, a one-person verbatim play about ageing, care, and the memories we keep of the people we love.

THE SPOIL *by Piri Eddy*

When a nascent pathogen wreaks ecological havoc on the planet's arable soil, the world's food security is plunged into chaos. Working alone on her family's old farm, a gifted biologist, sifts through thousands of seeds - and the memories of her family - in search of something that might grow.

LOG BOY *by Anthony Nocera*

Based on a lived experience of grief, *Log Boy* sees two generations of gay men come face to face with the ghosts of their past before they lay their friend to rest. A cut-throat horror comedy about contemporary gay life that's a little bit *Scream*, a little bit *The Boys in the Band* and a little bit *Cruising*.

A MESSAGE FROM MITCHELL

There is a wealth of playwrighting talent in South Australia and we're thrilled to give you a window into some of the great new plays that are on our horizon. In fact, we want to give you six windows - the theatrical equivalent of having your cake and eating it too!

Various dates between
23 NOV - 7 DEC
ODEON THEATRE

STATESIDE

DEUS EX FEMINA PRESENTS

SCENES WITH GIRLS

BY MIRIAM BATTYE

Other friends have come, got boyfriends and gone.

So what? Tosh and Lou have each other. They'll never be like the other girls. They won't sit in a narrative someone else thought up.

This is love. This is enough.

Scenes with Girls is a love story, but not the kind you might expect. Tosh and Lou, 20-something best friends and housemates, are inseparably devoted to each other. Together, they navigate a world filled with romantic ideals and sexual expectations, all while remaining fiercely determined to carve out their own path—even if it means stumbling along the way and sometimes hurting themselves and others in the process.

Unfiltered, brazenly funny and often uncomfortably flawed, Battye has written a delightfully sharp study of millennial sexual politics and all-encompassing female friendships. *Broad City* meets *Fleabag*, with hints of a much grittier *Sex and the City*, *Scenes with Girls* will particularly resonate with those still navigating the messy realities of sexual exploration and the complexities of sharehouse life.

DIRECTOR Ashton Malcolm

DIRECTING MENTOR Nescha Jelk

DESIGN CONSULTANT Meg Wilson

SOUND DESIGNER/COMPOSER Antoine Jelk

PRODUCER Deus Ex Femina
(Katherine Sortini)

CAST Zola Allen
Brittany Gallasch
Caithlin O'Loghlen

CONTENT

Graphic sexual content. Very strong adult themes. Frequent coarse language.

3 - 13 DECEMBER 2025

The Studio, Goodwood Theatre



DATE	TIME
3 Dec	7pm (Preview)
4 Dec	7pm (Opening Night)
5 Dec	7pm
6 Dec	7pm
7 Dec	2pm
10 Dec	7pm
11 Dec	7pm
12 Dec	7pm
13 Dec	2pm & 7pm

TICKETS

PREVIEW	FULL PRICE	CONCESSION
\$15.00	\$30.00	\$22.50

Originally premiering at London's Royal Court Theatre in 2020, the play is now being brought to life by Deus Ex Femina as part of their Cultivo stream. It will be featured in the company's 2025/2026 Goodwood Theatre & Studio's Residency, titled '*Audentes Fortuna Iuvat*' (Fortune Favours the Bold).

www.deusexfemina.com

State Theatre Company South Australia supports and showcases other great local theatre companies as part of our Stateside program. Stateside productions are made and presented by other companies but receive substantial production, rehearsal and marketing support. As a State Theatre Company South Australia Subscriber, you receive 10% off tickets to these magnificent projects: simply make your selection on the booking form.

FLYING PENGUIN PRODUCTIONS IN ASSOCIATION WITH THE GOODWOOD THEATRE AND STUDIOS

AMERICAN SONG

BY JOANNA MURRAY - SMITH

Seemingly ripped straight out of today's headlines, *American Song* is an intimate and deeply moving meditation on what it means to be a parent in a changing world and a searing and unforgettable exploration of the story and song that is America.

"A miraculous masterpiece. An incomparable and utterly transcendent play" - *Broadway World*

As Andy heads off to work to give the biggest presentation of his career, he wishes his teenage son goodbye. Eight hours later everything has irrevocably changed. Andy and the Nation are left asking how much we are responsible for the world we have created and the people our children become?

Presented by the multi award-winning company that brought you *Sea Wall* and *Glengarry Glen Ross* and written by the internationally acclaimed playwright of the sell-out sensation *Julia*.

DIRECTOR David Mealor

SET AND COSTUME DESIGNER Kathryn Sproul

LIGHTING AND AV DESIGNER Nic Mollison

COMPOSER AND SOUND DESIGNER Quentin Grant

CAST Renato Musolino

CONTENT

Coarse language and adult themes.

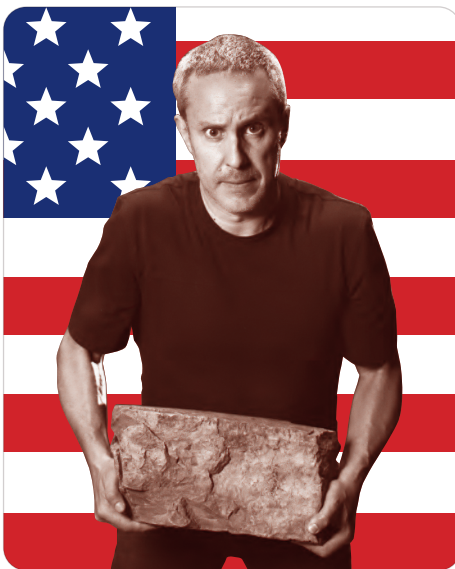


Government of South Australia
Arts South Australia



23 OCTOBER - 2 NOVEMBER 2025

The Goodwood Theatre – Main Theatre



DATE	TIME
24-Oct	7pm (Preview)
25-Oct	7pm (Opening Night)
28-Oct	6:30pm
29-Oct	6:30pm
30-Oct	11am & 7pm
31-Oct	7pm
1 Nov	2pm & 7pm
2 Nov	4pm

TICKETS	ADULT PREVIEW	CONCESSION PREVIEW
	\$42.00	\$32.00
ADULT	CONCESSION	
\$49.00	\$39.00	
STUDENT/UNDER 30		
\$31.50		

www.flyingpenguinproductions.org



SUBSCRIBER BENEFITS

Become a Subscriber today and start enjoying a wide range of benefits and exclusive opportunities.

HUGE TICKET DISCOUNTS

Subscribers get 20% off standard ticket prices by purchasing any subscription package. Plus, Seniors Card holders, those under 30, and full-time students enjoy even more significant discounts when they subscribe.

BEST SEATS IN THE HOUSE

Subscribers enjoy priority access to the best seats in the house. You can subscribe at any time, but to guarantee the best seats, be sure to subscribe during the priority booking period, which runs until 2 December 2024.

EXCLUSIVE EVENTS & OFFERS

Subscribers are invited to exclusive Briefings, talks, and events throughout the year, offering insights into our shows' themes and a behind-the-scenes look at their production.

You'll also enjoy special discounts at various arts events and local businesses around Adelaide, at locations such as:

- Adina Apartment Hotels/TFE Hotels
- Bread and Bone
- Fino Vino
- Hellbound
- InterContinental Adelaide
- Leigh Street Wine Room
- NT Live - Wallis Cinema
- ORBE Norwood
- Parlamento Restaurant
- S.C. Pannell Winemakers
- Shobosho
- Sprout
- Strathmore Hotel
- T Bar Tea Salon
- The Lane
- The Nail Bar



"Candide", 2024. Photo by Andrew Beveridge.

FLEXIBILITY

Your subscription tickets are super flexible. You will have one free exchange per show – you will not be charged any transaction fees if you would like to exchange your ticket for another date (subject to availability).

SUBSCRIBER ADDITIONAL TICKETS

Book additional tickets at discounted Subscriber prices for family and friends at any time up to the show. Please see the booking form or our website for pricing information.

PAYMENT PLANS

We offer Subscriber-only payment plans where you can pay in instalments. Please select the 'credit card by instalment' option on the booking form.

PERSONAL SERVICE

Our ticketing team at State Theatre Company South Australia is here to help you with your ticket package and any specific seating requests. So please contact us on ph 08 8415 5353 or email subscriptions@statetheatrecompany.com.au for assistance to set up your subscription or throughout the year.

GIFT VOUCHERS

Make the gift of theatre and purchase gift vouchers for friends and family at any cost, to be used at any available performance/s throughout the 2025 season.



SUBSCRIPTION PACKAGES

We have different Subscription packages to suit everyone:

GOLD SUBSCRIPTION

Enjoy exclusive access to opening night performances and pre-show functions. With only 50 Gold Subscriptions available, they're in high demand, so book soon to secure your spot! Each Gold Subscription package includes a minimum \$630 tax-deductible donation. To book, complete the booking form or call 08 8415 5353.

SENIORS PACKAGES

Available to anyone over 60 who holds a Seniors Card.

UNDER 30s AND FULL-TIME STUDENTS

If you're under 30 or a full-time student (secondary or tertiary), we want to make it easy for you to enjoy the theatre. You'll receive our most heavily subsidised subscription packages.

GROUP PACKAGES

Book subscriptions or single play tickets with your group of ten or more friends and every tenth ticket is free! Group bookings cannot be made online and must be made in a single transaction. To organise your group, please return your booking forms together or call 08 8415 5353.

TEACHER PACKAGES

Earn hours of certified professional development simply by attending the theatre! Select the 'teacher subscriber' option on the booking form (packages must include at least four of the following State Educate Program plays: *Housework*, *The Dictionary of Lost Words*, *Looking for Alibrandi* and *Dear Son*).



MEMBERSHIPS

We'd love for you to join our family! If you're not ready for a full subscription, we have a great alternative for you.

Introducing our new State Theatre Company South Australia Memberships.

STATE MEMBER

For an annual fee of only \$50, you can become a State Member and enjoy 15% off single ticket prices, discounted tickets to our Tangent Talks, free ticket exchanges, and access to exclusive offers and giveaways.

YOUNG MEMBER

If you are aged 16-25 years old, you can become a Young Member. For \$10 per year, Young Members receive even greater discounts on tickets as well as the same benefits offered to State Members.

Simply join by visiting
statetheatrecompany.com.au/member

EVENTS

TANGENT TALKS

Our Tangent Talks, presented in collaboration with the State Library South Australia, connect our artists with the audience to explore the big ideas behind our productions. We feature prominent voices from the creative, academic, and political spheres to delve into the themes of selected plays from our season. Tickets are \$10 and include a glass of wine from our partner S.C. Pannell. Tangent Talks start at 6pm at the State Library of South Australia. Reserve your spot on our website for each event.

Dates for 2025 Tangent Talks are:

- Housework* – Monday 20 January
- Kimberly Akimbo* – Monday 2 June
- Dear Son* – Monday 16 June
- The Glass Menagerie* – Monday 20 October



S. C. PANNELL
WINEMAKER

SUBSCRIBER BRIEFINGS

Subscribers enjoy exclusive briefings that offer a behind-the-scenes look at the theatre and insights from our talented artists and creatives before the show debuts. This is your opportunity to get up close and personal with each production. Briefings begin at 6pm and are included at no extra cost with your subscription. Check the calendar for dates.

POST-SHOW Q&A'S

After selected evening performances of shows throughout Season 2025, we hold Q&As with our artists and creative teams - check the performance calendar for details.

A DATE WITH STATE

Supported by the Office for Ageing Well and Seniors Card, join us for tea and coffee one hour before select matinee performances for A Date With State. After the show, stay for a discussion on how these fantastic plays are brought from page to stage. There's no extra cost for Q&As or A Date With State—just attend on the specified date. Check the calendar and book your spot accordingly

Office for Ageing Well and Seniors Card



Government of South Australia
SA Health



SENIORS CARD

STATE EDUCATE

EXPERIENCE

State Theatre Company South Australia's education program enables young people to experience theatre performances across the State each year. Discounted school group tickets, exclusive post show Q&A's and supportive learning resources encourage further conversation and investigation of key ideas and processes involved in our productions.

ENGAGE

120 students and teachers participated in the Flinders University Young Theatre Makers Award pilot in 2024, improving theatre-making skills and culminating in a public performance and inaugural award, in partnership with Drama SA. 50 workshops reached 1,100 students, enhancing skills, confidence, and curriculum outcomes. Our Work Experience, Winter School and Summer School programs connected young enthusiasts with peers and industry professionals through workshops and behind-the-scenes opportunities.



SUPPORT

Each year with support from our education partners, we connect students across South Australia to live theatre and support their career pathways in performance, directing, design, stage management, technical roles, producing and arts marketing.

Please visit the Education page on the website or contact us on 08 8415 5307 or education@statetheatrecompany.com.au to learn more about State Educate.



STATE THEATRE COMPANY SOUTH AUSTRALIA

I am forever grateful that State Theatre Company South Australia got to me when I was so young and impressionable – enabling me to see plays our family could not afford in those days.



So many of those plays back when I was younger are etched into my mind forever. By leaving a gift in my will, I think the same can apply to future generations.

Valdis Dunis, legacy donor

The State Theatre Company South Australia Foundation is vital in raising support through philanthropy and corporate and community partnerships. We thank all our Foundation members for their expertise, time and dedication.

Your gift helps us keep theatre at the heart of South Australia's cultural life, as we have for successive generations. Support us and join State Theatre Company South Australia's passionate community of donors where your contribution, big or small, will allow for you to have a starring role in this important legacy.



DRAMATIC WOMEN

**Support women
in theatre.**



COMMISSIONING COLLECTIVE

**Create bold new
theatre works.**



MAJOR PRODUCTION CIRCLE

**Help us stage
major productions.**

You can play a starring role with State Theatre Company South Australia by directly supporting specific areas of interest through our three dedicated giving circles – the Commissioning Collective, Dramatic Women and Major Production Fund.



To learn more about donating or leaving a gift in your will, follow the QR code or visit statetheatrecompany.com.au/donate



STATE GREATS

OUR WONDERFUL DONORS

\$25,000+

Alison & David Smallacombe
Arts Projects Australia
Sarah & Geoff Rohrsheim
Kate & Simon White

\$20,000+

Jill Hill & Robert Warner
Diané Ranck OAM

\$10,000+

Rob Brookman &
Verity Laughton
David McKee AO & Pam McKee

\$7,500+

Joe Thorp & Trish White AM

\$5,000+

Mitchell Butel
Chris & Christine Guille
Nick, Inena, Jasmyn &
Felix Setchell
Tony & Gustie de Maaijer
Sheryn Foond

\$2,000+

Lady Edith Badger
Legh Davis
Jane Doyle OAM & Ian Doyle OAM
Malcolm Gray QC &
Laura Healy
John & Rosemary Gumley
Dr Zenon Herzberg &
Mrs Susie Herzberg OAM
Mango & Sam Hill-Smith
Julian Hobba
Andrew Kamm
Claudine Law & Mark Balnaves
Pamela McKee
Bernie Pfitzner & Kate Logan
Andrew & Gayle Robertson
Donald Sarah AM
Andrew Sweet
Dr Patrick Wells

\$1,000+

Adelaide Theatre &
More Social Club
Aldridge Family Endowment
Peter Alldritt & Martin Oldfield
Rebecca Anderson &
Simon Blewett
Dorothy & Roger Beagley
David Bleby QC &
Elizabeth Bleby
Coralie Cheney
Nicole & David Crawford
Angela Cook

Amy Daniell
Irene Doskatsch
Dr Meridy Dunn &
Dr Peter Allcroft
Diana Fry
Michael & Isobel Harry
Karen Hayes
Jude Henshall
Kathryn & Nicholas House
John & Kate Irving
Anne Levy AO
Tim Lloyd
Roger Masters
Maria Panagiotidis
Nicolle Rantanen Reynolds
I.C. & K.F. Kaye
Roberts-Thomson
Richard Ryan AO
Roger & Helen Salkeld
Anne Simmons
Andrew & Barbie Staniford
Nigel Steele Scott
Jenny & Sarah Strathearn
Ida Tirimacco

\$500+

Anonymous (3)
John Bishop AO
Lucy Bizot
Max Brennan
Kimberlee Brown
Libby Burns
Annabelle & David Chan
Leesa Chesser
Peter Crambrook
Caroline Croser
Penelope Croser
Judi Denton
Kay Dowling
Lyn Edwards
Sue Gredley
Noel & Janet Grieve
Annabel Hill-Smith
Nicola Irons
Glenys Jones OAM
Sarah Keenihan
Michael & Sue Kitohener
Kathryn Needs
David O'Loughlin
Sandy Pitcher
Alice Rolls
Dr Andrew & Susan Saies
P&S Smith
Christine & Robert Waltham
Gavin Wanganeen
Joel Wemmer
Judy Underdown
Holly Veale

2025 PRODUCTION PATRON

FWH Foundation –
Kimberly Akimbo

COMMISSIONING COLLECTIVE

Mitchell Butel
Rob Brookman AM &
Verity Laughton
Jane Doyle OAM & Ian Doyle OAM
Malcolm Gray QC
Christopher Guille
Jill Hill & Bob Warner
Julian Hobba
Diané Ranck OAM
Andrew & Gayle Robertson
Mango & Sam Hill-Smith
Don Sarah AM
David McKee AO & Pam McKee

DRAMATIC WOMEN

Libby Burns
Lucy Bizot
Leesa Chesser
Dr Caroline Croser
Penelope Croser
Christine Guille
Laura Healy
Jude Henshall
Kathryn House
Glenys Jones OAM
Sarah Keenihan
Sue Kitohener
Kate Logan
Natasha Malani
Pamela McKee
Kathryn Needs
Bernie Pfitzner
Maria Panagiotidis
Sandy Pitcher
Nicolle Rantanen Reynolds
Diané Ranck OAM
Alison Smallacombe
Ida Tirimacco
Judy Underdown

GOLD SUBSCRIBERS

Peter Alldritt & Martin Oldfield
David & Nicole Crawford
Inene Doskatsch
Kay Dowling
Valdis Dunis
Meridy Dunn & Peter Allcroft
Jason & Christine Dunstone
Dr Lynette Edwards
Dr Peter Goldsworthy AM &
Lisa Temple
Malcolm Gray QC &
Laura Healy
John & Rosemary Gumley

Nicola Irons
John & Kate Irving
Jill Hill & Bob Warner
Mango & Sam Hill-Smith
Anne Levy AO
Diané Ranck OAM
Maria Panagiotidis
Andrew & Gayle Robertson
Sarah & Geoff Rohrsheim
Roger & Helen Salkeld
Nick, Inena, Jasmyn &
Felix Setchell
Alison & David Smallacombe
Andrew & Barbie Staniford
Jenny & Sarah Strathearn

TRUSTS & FOUNDATIONS

Anonymous Philanthropic
Foundation
FWH Foundation
Hill Warner Foundation
James & Diana Ramsay
Foundation

LEGACY DONORS

Anonymous (4)
Lady Edith Badger
Victoria & Thomas Bridgland
Rob Brookman
Jill Hill & Bob Warner
Mitchell Butel
Marjorie Polyeux
Maria Panagiotidis
Diané Ranck OAM
Anne Roman
Merry Wickes
Valdis Dunis
Barbara Walter
Grant Morgan

Our work is only made possible by the support of our community of generous donors. We sincerely thank all those who have made donations to State Theatre Company South Australia, including the many who donated less than \$500. This list reflects donations made from 1 July 2023 to 19 August 2024.

STATE ACCESS

We are committed to giving all South Australians the opportunity to share the experience of theatre.

A large text and screen reader-friendly version of this brochure is available for download from statetheatrecompany.com.au/access

AUDIO DESCRIPTION

Audio-described performances for blind and vision-impaired audience members include pre-show tactile tours of the props and costumes, description of the set and staging, and introduction to the actors. Audio information is published on our website before the performance.

CAPTIONED PERFORMANCE

We present captioned performances on select dates in the Dunstan Playhouse. Dialogue is displayed in real-time on screens next to the stage during the performance. Please indicate on your booking form if you require a caption-accessible seat.

AUDIO ENHANCEMENT

A Beyerdynamic Hearing System is available at the Dunstan Playhouse for patrons requiring hearing assistance. Transmitter packs are available to borrow from the Box Office in the Dunstan Playhouse foyer 30 minutes before the performance. You may also bring your headphones.

Please contact us directly at 08 8415 5353 or email tickets@statetheatrecompany.com.au if you have any questions about this program or require assistance with your booking.

Visit statetheatrecompany.com.au for all our Equal Access ticket options.

WHEELCHAIR ACCESS

Theatres are wheelchair accessible. Please indicate on your booking form if you require a wheelchair-accessible seat.

CARERS

We offer a complimentary companion ticket for Companion/Carer Card holders who attend performances with a patron requiring access support. Reserve your companion tickets on the booking form.

See the Calendar for dates and times of audio-described and captioned performances.

EQUAL ACCESS TICKETS

State Theatre Company South Australia offers several Equal Access ticket initiatives for unwaged people, and low-income earners with a Health Care Card.

COMMUNITY NIGHTS

We hold regular Community Nights and provide ticket offers to First Nations and specific community audience groups to experience our productions and make our season accessible to everyone.

SUBSCRIPTION PRICING

Purchase four plays or more to access the generous discounts on single ticket prices.

You'll receive the best seats in the house and save up to 20% off our standard single ticket prices no matter what size package you purchase!

DEAR SON / THE GLASS MENAGERIE	Adult		Senior		Concession		U30 / Student	
	Preview/ Matinee	Evening	Preview/ Matinee	Evening	Preview/ Matinee	Evening	Preview/ Matinee	Evening
Subscription Price	\$72.00	\$80.00	\$68.00	\$76.00	\$65.00	\$72.00	\$30.00	\$30.00

HOUSEWORK / THE DICTIONARY OF LOST WORDS / LOOKING FOR ALIBRANDI	Adult		Senior		Concession		U30 / Student	
	Preview / Matinee	Evening	Preview / Matinee	Evening	Preview / Matinee	Evening	Preview / Matinee	Evening
A RESERVE	\$80.00	\$88.00	\$76.00	\$84.00	\$72.00	\$80.00	\$39.00	\$39.00
B RESERVE	\$72.00	\$80.00	\$68.00	\$76.00	\$65.00	\$72.00	\$39.00	\$39.00

KIMBERLY AKIMBO	Adult		Senior		Concession		U30 / Student	
	Preview / Matinee	Evening	Preview / Matinee	Evening	Preview / Matinee	Evening	Preview / Matinee	Evening
PREMIUM	\$120.00	\$128.00	\$114.00	\$122.00	\$108.00	\$116.00	\$49.00	\$49.00
A RESERVE	\$104.00	\$112.00	\$99.00	\$106.00	\$94.00	\$101.00	\$49.00	\$49.00
B RESERVE	\$96.00	\$104.00	\$91.00	\$99.00	\$87.00	\$94.00	\$49.00	\$49.00
C RESERVE	\$60.00	\$68.00	\$58.00	\$65.00	\$55.00	\$62.00	\$49.00	\$49.00

Subscription packages incur an \$9.50 processing fee per Subscriber.

	6 PLAY	5 PLAY	4 PLAY
Gold Subscription	\$1,320	\$1,210	\$1,100

Gold Subscriptions are strictly limited to 50 packages and include a \$630 tax-deductible donation. Gold subscriptions can be booked via phone, email or post.

ADD ON

GREAT AUSTRALIAN BITES	All Tickets	
	Preview/Matinee	Evening
Subscription Price	\$10.00	\$10.00

STANDARD PRICING

DEAR SON / THE GLASS MENAGERIE		
	Preview / Matinee	Evening
Adult	\$89.00	\$99.00
Concession	\$81.00	\$90.00
STCSA Member	\$76.00	\$85.00
U30 / Student	\$35.00	\$35.00
STCSA Young Member	\$26.00	\$26.00

GREAT AUSTRALIAN BITES	
	ALL PERFORMANCES
Adult	\$20.00
Concession	\$15.00
STCSA Member	\$10.00
U30/ Full Time Student	\$10.00
STCSA Young Member	\$10.00

HOUSEWORK / THE DICTIONARY OF LOST WORDS / LOOKING FOR ALIBRANDI		
	Preview/Matinee	Evening
A RESERVE - Adult	\$99.00	\$109.00
A RESERVE - Concession	\$90.00	\$99.00
A RESERVE - STCSA Member	\$85.00	\$93.00
B RESERVE - Adult	\$89.00	\$99.00
B RESERVE - Concession	\$81.00	\$90.00
B RESERVE - STCSA Member	\$76.00	\$85.00
ALL RESERVES - U30 / Student	\$39.00	\$39.00
ALL RESERVES - Young Member	\$26.00	\$26.00

KIMBERLY AKIMBO		
	Preview/Matinee	Evening
PREMIUM - Adult	\$149.00	\$159.00
PREMIUM - Concession	\$135.00	\$144.00
PREMIUM - STCSA Member	\$127.00	\$136.00
A RESERVE - Adult	\$129.00	\$139.00
A RESERVE - Concession	\$117.00	\$126.00
A RESERVE - STCSA Member	\$110.00	\$119.00
B RESERVE - Adult	\$119.00	\$129.00
B RESERVE - Concession	\$108.00	\$117.00
B RESERVE - STCSA Member	\$102.00	\$110.00
C RESERVE - Adult	\$75.00	\$85.00
C RESERVE - Concession	\$68.00	\$77.00
C RESERVE - STCSA Member	\$64.00	\$73.00
ALL RESERVES - U30 / Student	\$49.00	\$49.00
ALL RESERVES - Young Member	\$30.00	\$30.00

Single ticket bookings via State Theatre Company South Australia incur an \$9.50 per transaction fee. Standard priced single tickets go on sale 2 Dec 2024. Ticket prices are subject to change without notice and may fluctuate based on market demand. Current pricing can be found at statetheatrecompany.com.au/prices-ticket-types/

Please call our Ticket Office on 08 8415 5353 for all ticketing enquiries.

CALENDAR

HOUSEWORK Dunstan Playhouse

Monday	Tuesday	Wednesday	Thursday	Friday	Saturday	Sunday
3 Feb 6pm (SUB)	-	-	-	7 Feb 7:30pm (P)	8 Feb 7:30pm (P)	-
10 Feb 6:30pm (P)	11 Feb 7:30pm (O)	12 Feb 6:30pm	13 Feb 7:30pm	14 Feb 7:30pm	15 Feb 2pm (AD) 7:30pm	-
17 Feb 6:30pm (QA) (AD)	18 Feb 6:30pm	19 Feb 11am (CC) (DWS) 6:30pm	20 Feb 7:30pm	21 Feb 7:30pm	22 Feb 2pm 7:30pm	-

THE DICTIONARY OF LOST WORDS Dunstan Playhouse

Monday	Tuesday	Wednesday	Thursday	Friday	Saturday	Sunday
-	-	-	3 April 7:30pm (P)	4 April 7:30pm (P)	5 April 7:30pm (O)	-
7 April 6:30pm (QA) (AD)	8 April 6:30pm	9 April 11am (CC) (DWS) 6:30pm	10 April 7:30pm	11 April 7:30pm	12 April 1pm (AD) 7:30pm	-
14 April 6:30pm	15 April 6:30pm	16 April 6:30pm	17 April 1pm	-	-	-

LOOKING FOR ALIBRANDI Dunstan Playhouse

Monday	Tuesday	Wednesday	Thursday	Friday	Saturday	Sunday
19 May 6pm (SUB)	-	-	22 May (P) 7:30pm	23 May (O) 7:30pm	24 May 2pm 7:30pm	-
-	27 May 6:30pm	28 May 6:30pm	29 May 7:30pm	30 May 7:30pm	31 May 2pm 7:30pm	-

KIMBERLY AKIMBO Her Majesty's Theatre

Monday	Tuesday	Wednesday	Thursday	Friday	Saturday	Sunday
30 June 6pm (SUB)	-	-	-	-	-	-
-	8 July 7:30pm (P)	9 July 1pm (P) 7:30pm (P)	10 July 7:30pm (P)	11 July 7:30pm (O)	12 July 2pm 7:30pm	-
14 July 6:30pm (QA) (AD)	15 July 6:30pm	16 July 1pm 7:30pm	17 July 7:30pm	18 July 7:30pm	19 July 2pm (AD) 7:30pm	-

DEAR SON Odeon Theatre

Monday	Tuesday	Wednesday	Thursday	Friday	Saturday	Sunday
-	22 July 6pm (SUB)	-	-	-	26 July 7:30pm (P)	-
28 July 6:30pm (P)	29 July 6:30pm (P)	30 July 7:30pm (O)	31 July 7:30pm	1 Aug 7:30pm	2 Aug 2pm 7:30pm	-
4 Aug 6:30pm	5 Aug 6:30pm	6 Aug 6:30pm	7 Aug 7:30pm	8 Aug 7:30pm	9 Aug 2pm 7:30pm	-
11 Aug 6:30pm (QA)	12 Aug 6:30pm	13 Aug 1pm (DWS) 6:30pm	14 Aug 7:30pm	15 Aug 7:30pm	16 Aug 2pm 7:30pm	-

THE GLASS MENAGERIE Odeon Theatre

Monday	Tuesday	Wednesday	Thursday	Friday	Saturday	Sunday
-	11 Nov 6pm (SUB)	-	-	-	15 Nov 7:30pm (P)	-
17 Nov 6:30pm (P)	18 Nov 6:30pm (P)	19 Nov 7:30pm (O)	20 Nov 7:30pm	21 Nov 7:30pm	22 Nov 2pm 7:30pm	-
-	25 Nov 6:30pm (QA)	26 Nov 1pm (DWS) 6:30pm	27 Nov 7:30pm	28 Nov 7:30pm	29 Nov 2pm 7:30pm	30 Nov 5pm
-	2 Dec 6:30pm	3 Dec 1pm 6:30pm	4 Dec 7:30pm	5 Dec 7:30pm	6 Dec 2pm 7:30pm	7 Dec 5pm

ADD ON

GREAT AUSTRALIAN BITES Odeon Theatre

Monday	Tuesday	Wednesday	Thursday	Friday	Saturday	Sunday
-	-	-	-	-	-	23 Nov 1pm (<i>Triggered</i>) 5pm (<i>Spare a Thought For Jana Wendt</i>)
24 Nov 6:30pm (<i>Culture Slap</i>)	-	-	-	-	-	30 Nov 1pm (<i>Lost Socks and Polka Dots</i>)
1 Dec 6:30pm (<i>The Spoil</i>)	-	-	-	-	-	7 Dec 1pm (<i>Log Boy</i>)

AUDIO DESCRIBED Includes a tactile tour and discussion with the actors

CAPTIONED PERFORMANCE Text of the play displayed on the screens next to the stage

(DWS) A Date With State performances supported by Office for Ageing Well. See page 29 for details.

(SUB) SUBSCRIBER BRIEFING Behind the scenes insights from the directors, actors and creative team

(O) OPENING NIGHT The exclusive debut of the first show for Gold Subscribers, media and partners

(P) PREVIEW First public performances prior to opening night

(QA) QUESTION & ANSWER Post-show discussion with the cast



At every stage
Get MORE out of life
with ECH



1300 275 324
ech.asn.au

Proud sponsor of State Theatre Company South Australia

Take your place *on stage, on screen, or behind the scenes.*

Study Performance
Acting | Directing | Theatre Making

Flinders Performance degrees span acting, directing and theatre making, and have been designed in close consultation with our industry partners, including State Theatre Company South Australia, to prepare our graduates for twenty-first century performance across live, digital and emerging platforms.



Learn More



Flinders
University

PERFORMANCE

Adelaide Health Simulation



“The State Theatre Company South Australia and Adelaide Health Simulation (AHS) partnership is based on our shared interest in career sustainability and wellbeing of performers in Adelaide. Our performers use their skills in so many ways and at AHS that means helping train the health care professionals that keep our community safe and healthy.”

Mitchell Butel – STCSA Artistic Director



THE UNIVERSITY
of ADELAIDE

150
YEARS

UAS1377

This is where
your show
begins



THE UNIVERSITY
of ADELAIDE

make
history.

The University of Adelaide has been driving the arts sector in South Australia and beyond. We're proud to make history everyday by amplifying artistic potential and supporting the next generation of artists. When you leave our doors, the world becomes your stage.



PRV12105
CRICOS 00123M



Shining the spotlight on
innovative solutions

waternish.com.au

waternish



novatech

**Empower creativity
via event technology**



ncet.co



my other address

adinahotels.com

Spacious studios, 1 and 2 bedroom self-contained apartments with hotel service
in central locations across Australia, New Zealand and Europe.

15% off fully flexible rates for State Theatre subscribers at Adina Apartment Hotel
Adelaide Treasury. Book now using promo code: TH8226883

Proud sponsor of State Theatre Company South Australia.

Adina Apartment Hotel
Adelaide Treasury

Adina

BOARD

Kimberlee Brown
Jude Henshall
Jehad Ali
Diané Ranck
Alice Rolls
Joe Thorp (Chair)
Holly Veale
Gavin Wanganeen

STATE THEATRE COMPANY SOUTH AUSTRALIA FOUNDATION

Coralie Cheney
Jude Henshall
Matt Hyde
Diané Ranck
Sarah Rohrsheim
Alice Rolls
Rose Senesi
Andrew Sweet (Chair)
Simon White

EXECUTIVE

ARTISTIC DIRECTOR

Mitchell Butel

EXECUTIVE DIRECTOR

Julian Hobba

ARTISTIC

ARTISTIC PROGRAM MANAGER

Shelley Lush

ARTISTIC ASSOCIATE

Shannon Rush

COMMISSIONED WRITERS

Samuel Adamson
Jacob Boehme
Elena Carapetis
Isaac Drandic
John Harvey
Verity Laughton
Emily Steel
Kyron Weetra
Alexis West

EDUCATION

EDUCATION PROGRAM MANAGER

Fiona Lukac

FINANCE & ADMINISTRATION

CHIEF OPERATING OFFICER

Scott Grimes

FINANCE OFFICER

Inez Raspoet

OFFICE COORDINATOR

Caitlin Hendrey

MARKETING & DEVELOPMENT

HEAD OF MARKETING & BUSINESS DEVELOPMENT

Kristy Rebbeck

MARKETING EXECUTIVE

Ali Franceschini

PUBLICIST

Sophie Potts
Helene Sobolewski

COMMUNICATIONS ASSISTANT

Ainsley Ewart

GRAPHIC DESIGN & CONTENT COORDINATOR

Rachel Bell

VIDEOGRAPHER

Matt Byrne

DEVELOPMENT EXECUTIVE

Alyssa Franceschini

CORPORATE & COMMUNITY EXECUTIVE

Peta-Anne Louth

DEVELOPMENT COORDINATOR

Christine Bruderhans

TICKETING

TICKETING EXECUTIVE

Rosie George

TICKETING COORDINATOR

Rynn Ellison

PRODUCTION

HEAD OF PRODUCTION & TECHNICAL

Gavin Norris

PRODUCTION MANAGER

Gabrielle Hornhardt

WORKSHOP SUPERVISOR

Areste Nicola

LEADING HAND

Patrick Duggin

PROPS COORDINATOR

Stuart Crane

CARPENTER/METAL WORKER

Guy Bottruff
Grant Petruzevics
Joshua Stocker

SCENIC ART SUPERVISOR

Sandra Anderson

HEAD OF SOUND/RESIDENT SOUND DESIGNER

Andrew Howard

PRODUCTION ELECTRICIAN/ LIGHTING SUPERVISOR

Alexander Ramsay

PROP SHOP

Robin Balogh

WORKSHOP CASUALS

Michael Ambler
Elias Ppiros
Ben Brooks

WARDROBE

HEAD OF WARDROBE

Martine Micklem

WARDROBE PRODUCTION SUPERVISOR/BUYER

Enken Hagge

WIGS, MAKE UP & COSTUME HIRE

Jana DeBiasi

BROCHURE

ART DIRECTION, KEY ART & BROCHURE DESIGN

Jeff van de Zandt
Nadia Gianinotti
(Workshop Creative)

KEY ART PHOTOGRAPHER

Benny Capp

PRINTING

Print Solutions

SUBSCRIPTIONS & TICKETING

Kaurna Country
Lion Arts Centre
Level 1, Fowlers Building,
Corner Morphett St and North Tce,
Adelaide SA 5000

Ph 08 8415 5353

Email
subscriptions@statetheatrecompany.
com.au

*Please be aware you will need to walk
up three flights of stairs to reach our
office as there is no lift. If you have
mobility issues, please call or email
us instead.*

ADMINISTRATION

Kaurna Country
Lion Arts Centre
Level 1, Fowlers Building,
Corner Morphett St and North Tce,
Adelaide SA 5000

Ph 08 8415 5333

Email info@statetheatrecompany.
com.au

PRODUCTION

(including prop and costume hire)

Kaurna Country
Wigg & Sons Building
Access via 30 Walsh St,
Thebarton SA 5031

Ph 08 8415 5351

Email
propshop@statetheatrecompany.
com.au

KEEP IN TOUCH

Facebook, Twitter, Instagram:
@StateTheatreSA #STCSA
statetheatrecompany.com.au



CELEBRATING THE SUPPORT OF OUR PARTNERS

GOVERNMENT PARTNERS



Government of South Australia
Arts South Australia

State Theatre Company South Australia is assisted by the Australian Government through Creative Australia, its principal arts investment and advisory body.

PRESENTING PARTNERS



GREAT AUSTRALIAN BITES



Adina

THE GLASS MENAGERIE



DEAR SON



KIMBERLY AKIMBO

waterfish

HOUSEWORK

novatech

creative event technology
THE DICTIONARY OF LOST WORDS

ASSOCIATE PARTNERS



S. C. PANNELL
WINEMAKER



Government of South Australia
Department for Education



EDUCATION PARTNERS

CORPORATE PARTNERS



Office for Ageing Well and Seniors Card



Government of South Australia
SA Health



AEGEUS



PLATFORM

ACCESS PARTNERS



Thank you to T BAR TEA SALON for their ongoing support of State Theatre Company South Australia

MEDIA PARTNERS



FIFTY+SA

CityMag

The Advertiser
We're for you

WEEKENDPLUS

CREATIVE PARTNERS



BRINK



MELBOURNE THEATRE COMPANY



QUEENSLAND THEATRE



WAGNAN PRODUCTIONS
SARAH ROHRBHEIM

TRUSTS AND FOUNDATIONS

FWH FOUNDATION



DONOR GROUPS

COMMISSIONING COLLECTIVE

DRAMATIC WOMEN

MAJOR PRODUCTION FUND

STATE EDUCATE FUND



STATE THEATRE
COMPANY SOUTH AUSTRALIA