

STATE THEATRE COMPANY SOUTH AUSTRALIA

Paper
Mouth

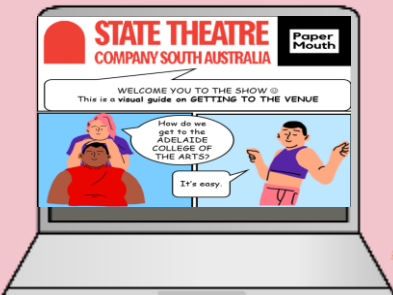
WELCOME YOU TO THE SHOW ☺
This is a visual guide on GETTING TO THE VENUE

How do we
get to the
ADELAIDE
COLLEGE OF
THE ARTS?

It's easy.

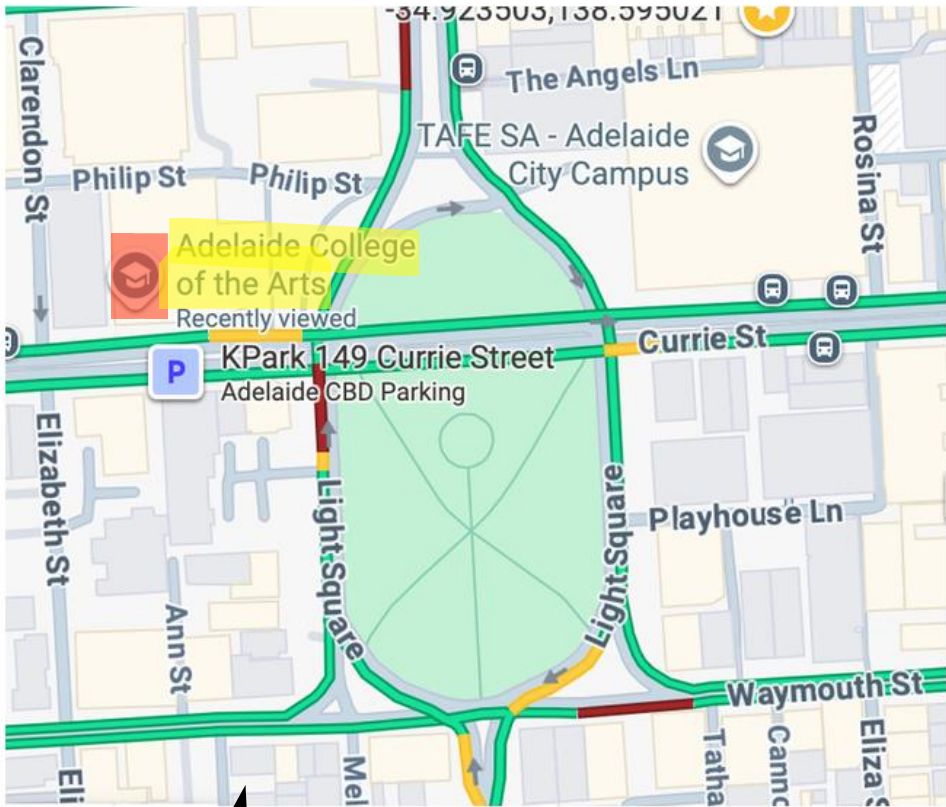


This document
has all we
needed to
make our
journey easy.





First, find it on a map. This will give you directions.



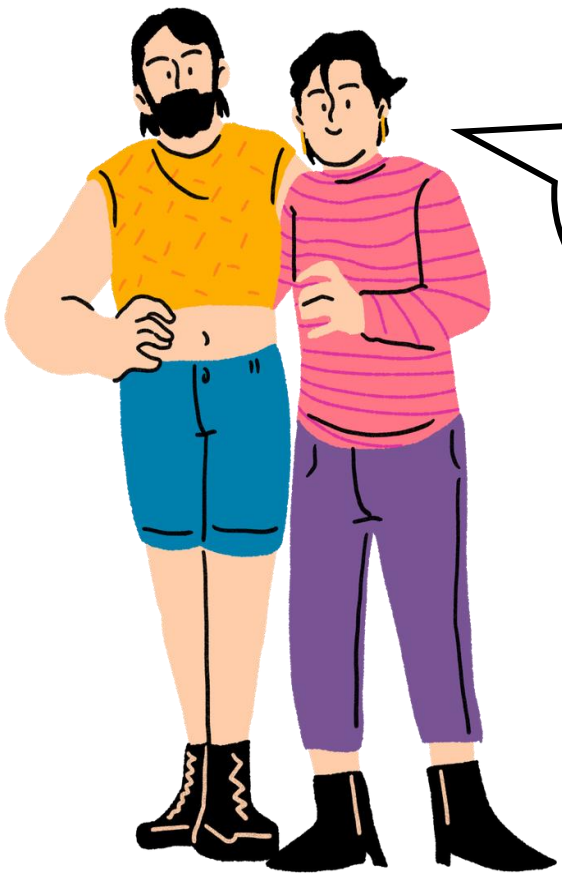
It is in the city of Adelaide. It is in the North West corner of Light Square.

You can click on [this Google Maps link](#) for in real time directions

The venue looks like this facing West.

It is at 39 Light Square.





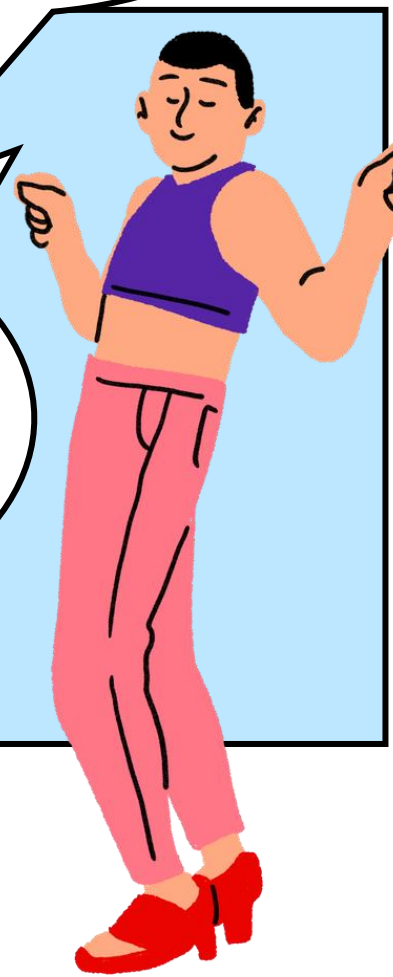
What if we get the BUS?



You can use [this AdelaideMetro PLAN MY JOURNEY LINK.](#)



Here is the [ACCESS AND DISABILITY INFORMATION link](#) for using public transport.



We can ask the bus driver for assistance.





Sometimes
we get the
TRAM.
It is FREE
too.



First, get the tram into the city
to/from the Entertainment Centre,
Adelaide Royal Hospital or Glenelg .
Get off at the CITY WEST stop



It is a 5 minute walk/
wheel for 350 metres
([Google Maps walk link](#)).

Cross to the south side
of North Terrace and
walk through the Lion
Arts Centre courtyard
entrance. Follow walking
map above.





We prefer getting the TRAIN.



You can come from the ADELAIDE RAILWAY STATION. It will take about 10 minutes.

When you leave the station, turn right along North Terrace. Then head West for about 600 metres and cross the road to the South side of North Terrace.



When you get to the CITY WEST tram stop, follow instructions above.

Here is a MAP SHOWING ALL THE PUBLIC TRANSPORT OPTIONS to Adelaide College of the Arts.





We want to come in a car. Is there car parking available?



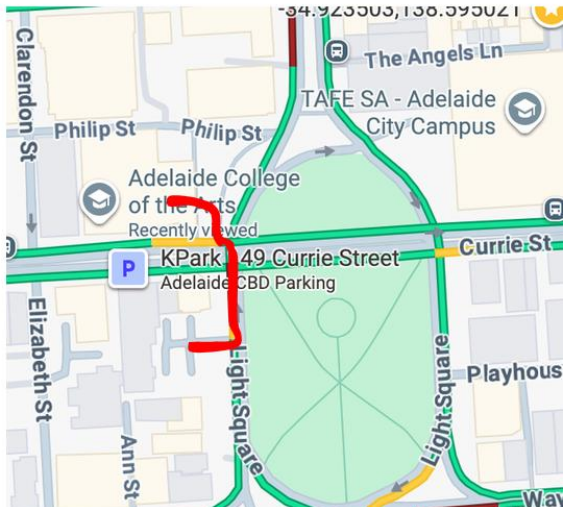
There is street parking on Hindley Street and Light Square. For peace of mind, it is best to give yourself ample time to find a car park on the street



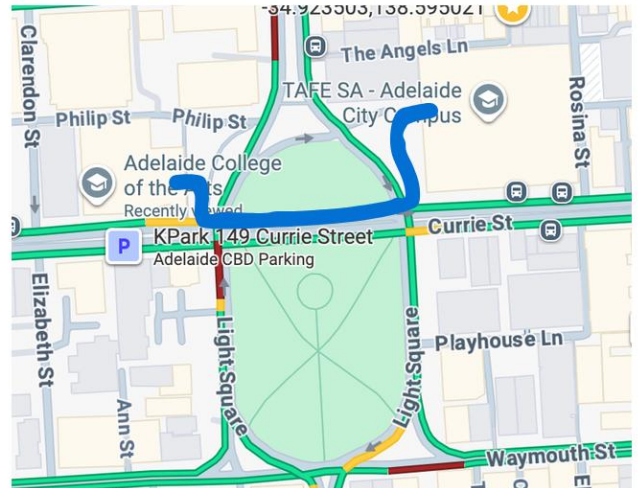
There are pay station open car parks between Hindley and Phillips Street



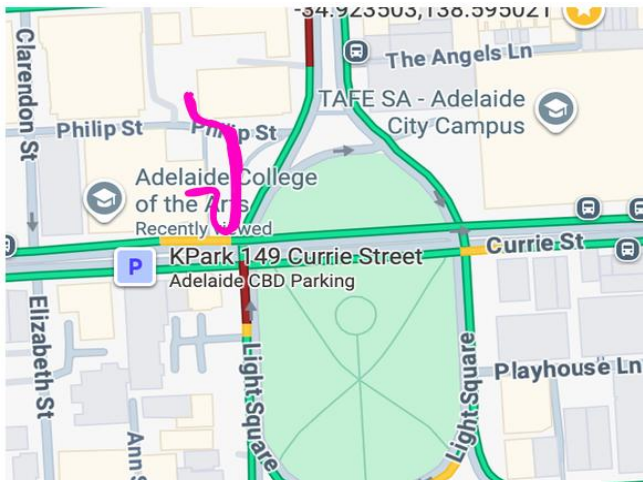
There are commercial parking lots at the Convention Centre and at Adelaide TAFE on North East corner of Light Square



[Red] = Route from **public, open-air car parking** is available on the **western side of Light Square**



[Blue] = Route from **paid parking station** **across Light Square, beneath the Adelaide City campus. Access is via Morphett Street**



[Pink] = Route from **public, open-air car parking** is available **between Hindley and Philip Streets, north of the Adelaide College of the Arts**



Where are the
DISABILITY
PARKING spots?

There are three
single car parks as
located on the map
below.



address or place

Type	Disabled
Number of Spaces	1
Angle of Park	90
First Control	3 hr Disabled At all times

Type	Disabled
Number of Spaces	1
Angle of Park	90
First Control	3 hr Disabled Monday to Saturday 8am-6pm

Type	Disabled
Number of Spaces	1
Angle of Park	90
First Control	2 hr Disabled At all times

YOU GOT HERE!!!
WELCOME 😊.

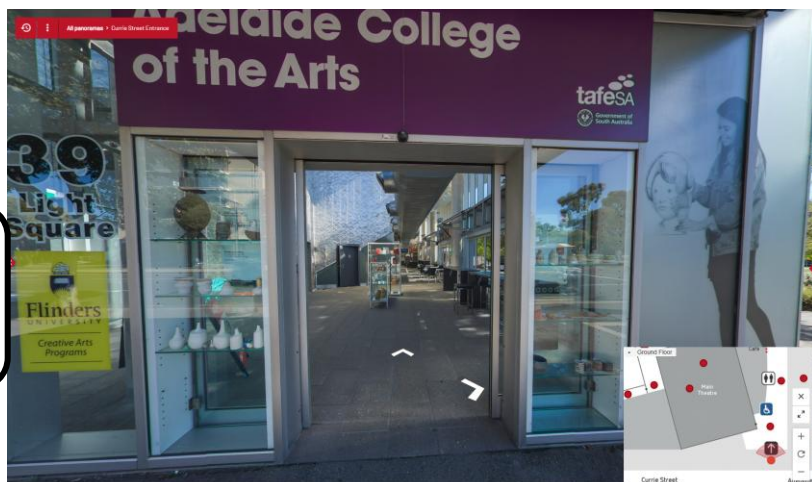
A virtual tour of the Morphett Street and Currie Street entrances and entering the building [is available here](#).

Both are WHEELCHAIR ACCESSIBLE.



Entrance from
Morphett Street/
Light Square.

Entrance from
Currie Street



NEXT COME INSIDE 😊

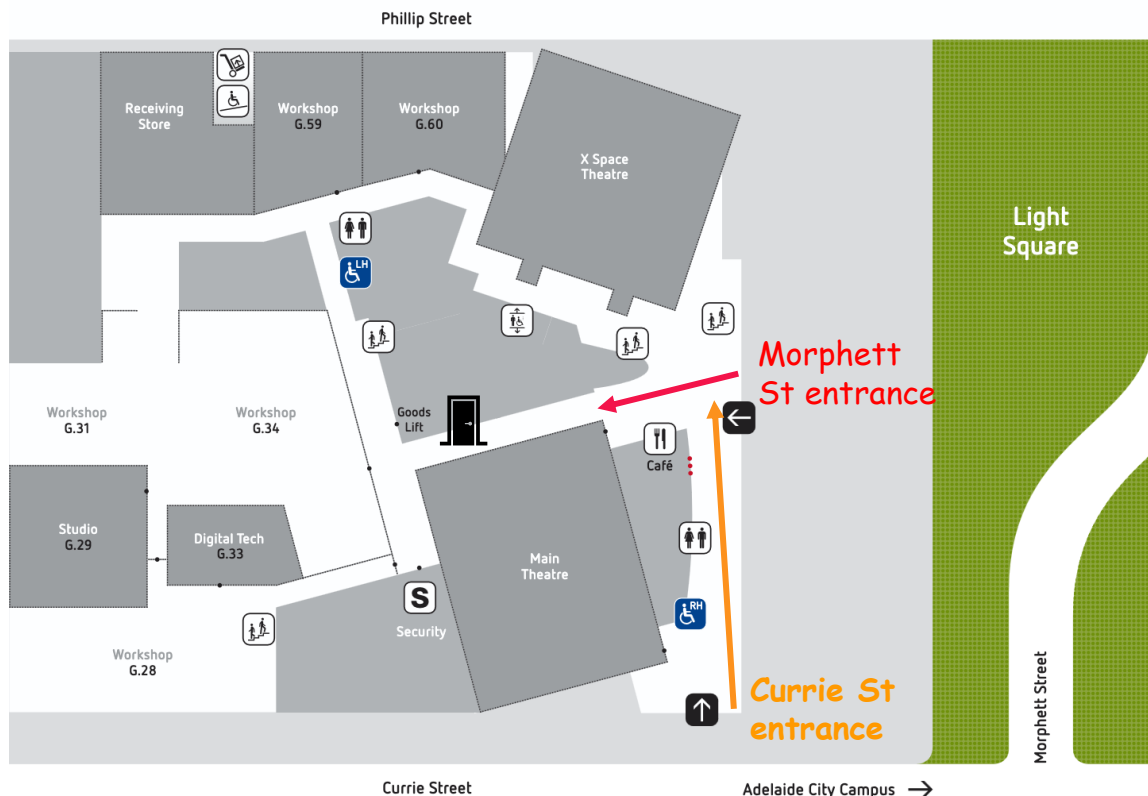
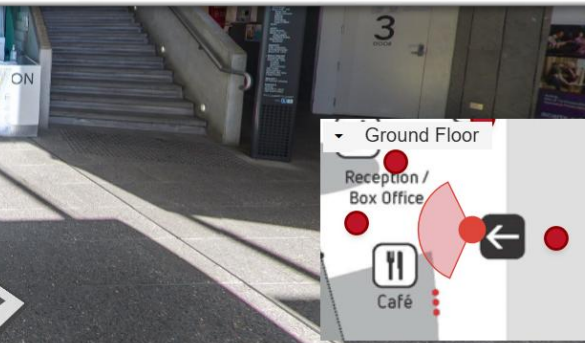
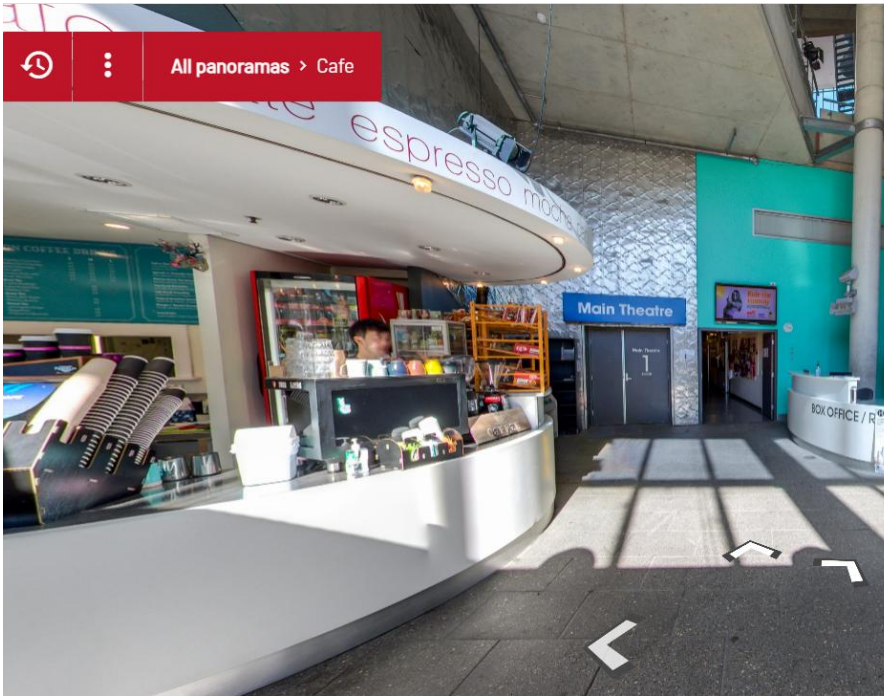
The venue is in THE MAIN THEATRE
on the ground floor.

See next page for a map.





Entering from Morphett Street, the MAIN THEATRE is straight in front. It is between the Café on the left and the BOX OFFICE on the right.





We are here
ready for
the show to
begin!



It's great to have you here
Now pop over to the
**SHOW AND VENUE AUDIENCE
AND ACCESS Visual Guide.**

This will give you lots of
information so you are prepared
for the experience.



FOR INFORMATION and/or ASSISTANCE
Prior to the show contact:
please contact
tickets@statetheatrecompany.com.au or 8415 5353
At the show:
Contact ushers and /or staff at the Box Office

This Visual Guide was created by Michèle Saint-Yves ©Copyright 2026

Used with permission and under exclusive licence by and to Paper Mouth Theatre for
their production of "UNCLE VANYbut there's ASMR soap cutting videos playing in the
bottom right corner"

for State Theatre Company of South Australia 2026 SPARK! Season.